

remake

Novelty through
deconstruction and
creation

©Thekla Weißkopf, 2025
All rights reserved

This research has received funding
from the European Union's Horizon
2020 research and innovation
programme under grant agreement
No [101060343] Textile Recycling
EXcellence, T-REX project.

Remaking is enabling and allowing change. It transforms slow decay into novelty. Abandonment into engagement. It recognises change as a universal process: bodies modify, our tastes unravel, our likes and dislikes alter, they change, constantly in motion. Yet our clothes remain static.

We have lost the ability to allow our clothes to change with us. A garment is left unused and unwanted, an artefact of the item it once was.

By remaking, we forge it anew, we allow the material to continue to exist. This is reverence for what is raw and bruised, a reckoning with the temporal and a rediscovery of the way it was meant to exist: to be used, to be worn, and to be adored.



Glossary

SEAM ALLOWANCE :

To sew two pieces together, you always need some space between the edge of the fabric and the seam.
The seam allowance is usually 1 cm (For this pattern all seam allowances are already included in the pattern)

RIGHT SIDE :

Is the „nicer“ side of the fabric, the one that is normally worn on the outside.

WRONG SIDE :

Is the „not-so-nice“ side of the fabric, the one that is normally worn on the inside.

When sewing, you must always make sure that the right side is facing the right side (RST - Right sides together).

BACKSTITCH :

Everytime you make a seam on the sewing machine, it's important to stitch a couple of stitches back and forth in the beginning and the end the secure the thread.

TOPSTITCH :

Topstitching is a stitch that is seen on the outside either for decorative reasons or for enforced endurance.

GRAIN :

The grain runs parallel to the edge of the fabric. Most garments are already processed in the grain. This means, the grain runs vertically from top to bottom of the garment.

CUT ON THE FOLD :

„Cut on the fold“ is always marked by a dotted line on a paper pattern piece. When cutting the pattern pieces from the material, „cut on the fold“ means you fold your fabric in half, then align the dotted edge of the pattern piece with the folded edge of the fabric.
Do not cut along the fold. Instead, cut around the other edges of the pattern. When you unfold the fabric, you'll have a full, symmetrical piece.

FRENCH SEAM :

The french seam is a way to sew a seam. It makes sure that the seam doesn't fray and creates a high quality look. For the french seam you first sew the seam with the left sides of the garments facing each other and then again with the right sides facing each other. There is an elaborate explanation of the french seam on page 14.

BIAS TAPE :

A bias tape is a string of fabric that is cut in the bias, which means diagonal to the grain of the fabric. This makes it more elastic. It is mostly used to cover raw edges or for decoration.

NOTCH :

A notch is a small marking with the scissors (a small cut of approx. 0,5 cm) within the seam allowance.

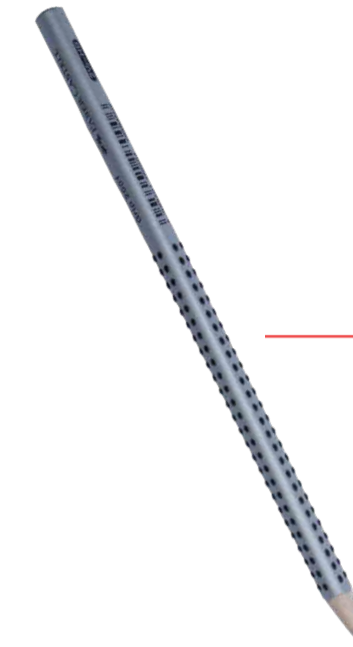
Materials

Fabric scissors

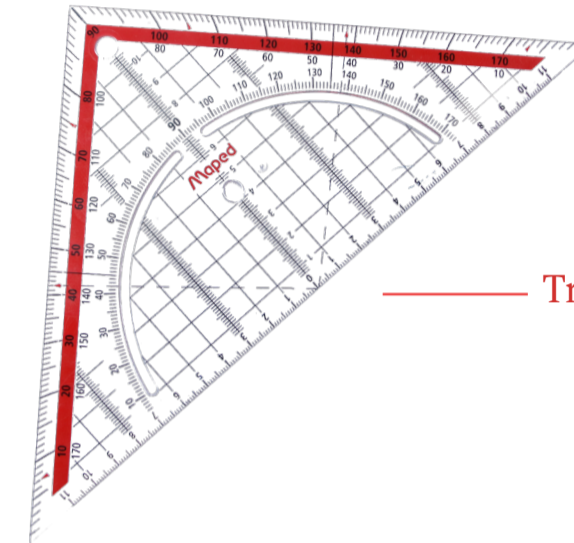


Sewing machine

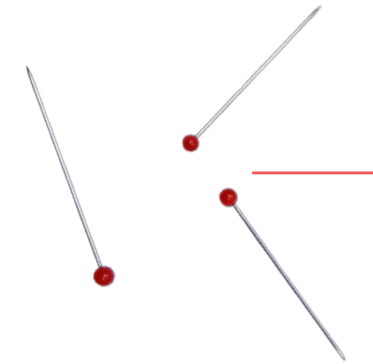
Pencil



Triangle



Pins



Seam ripper



Yarn



Needle



Safety pin



Ironing board



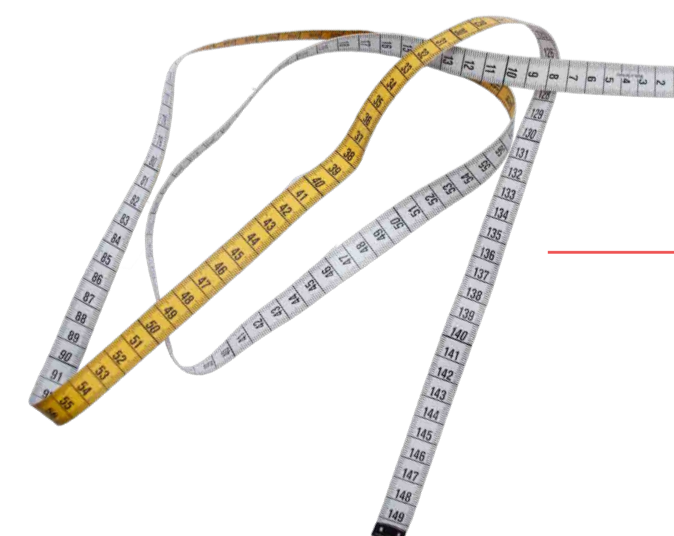
paper scissors



Iron



Measuring tape



There is such tenderness in remaking.

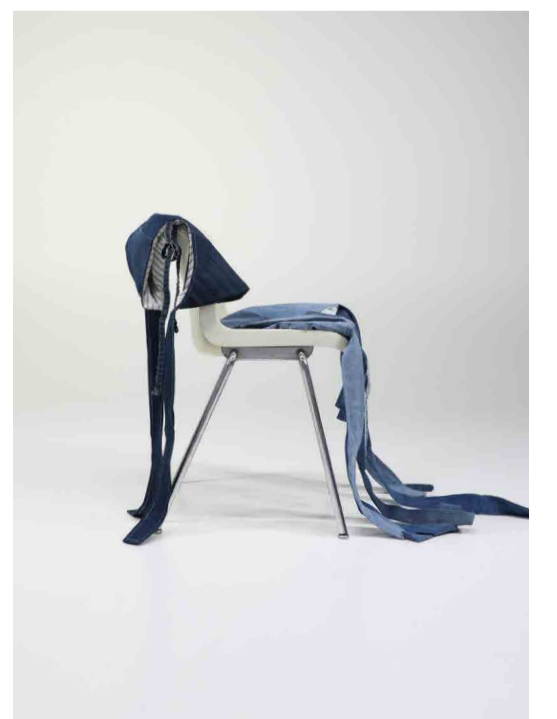
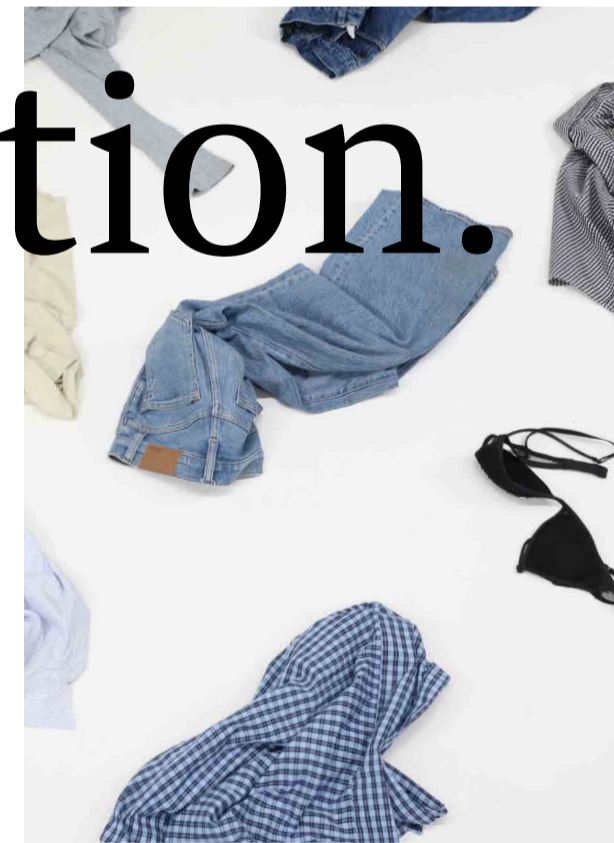
The essence remains, even as the form changes.



It is an act of care, a quiet rebellion,

independence and self-reliance

Creating novelty blooms through deconstruction and creation.



blouse



remake

blouse

About the pattern

This pattern explains how to turn a men's shirt into a blouse with short sleeves. The pattern provides some variations and leaves you space to add any details and decorations that you like. Treat the pattern as a base for your own creativity.

The pattern is not a zero-waste pattern, so it will not be using up all the material and there will be some left overs. Of course you are free to further decorate your blouse or keep the left overs for patchworking projects. If not, please make sure you dispose them properly.

CONTENT :

Deconstruction p. 12
Overview of pattern pieces p. 12
Cutting out the pieces p. 13

Sewing instructions p. 14
Sleeve variations p. 23

Pattern pieces to cut out extra sheet

MATERIAL :

This blouse is designed for the remaking of a men's shirt, but you are free to take any type of material you find suitable!

When choosing a shirt, keep in mind that depending on the size you wish to make, you might need a bigger size in the men's shirt as well. Otherwise, the pattern pieces might not fit onto the material.

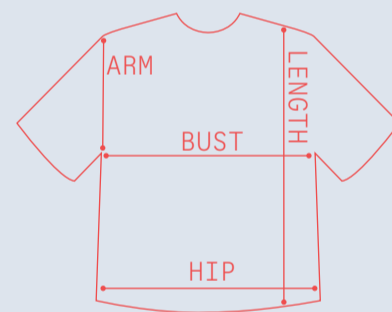
PATTERN PIECES :

This pattern is available in three different sizes: S/M, M/L and L/XL. You can find the pattern pieces on the extra sheet.

SIZE CHART :

To find out what size you would like to make your blouse from, you can check a top/blouse that you already have and that fits well and compare the measurements to the ones in the chart. You can also measure yourself, remember to always add a couple of centimetres to make sure the blouse has room for movement of the body.

The measurements that are important for the blouse are the bust, the hips and the arm.

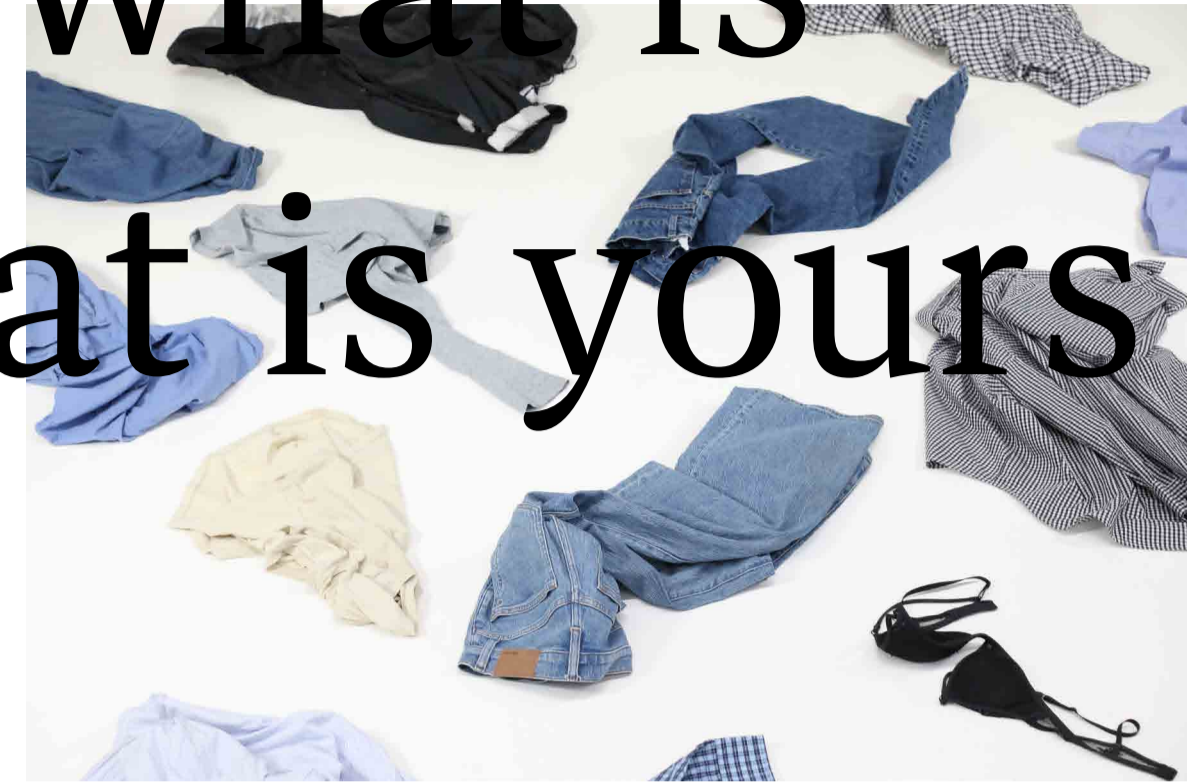


For measuring, lay your reference garment flat on the floor and measure the bust, hip and arm and compare them to the size chart. It's always safest to size up in case your measurements are between sizes.

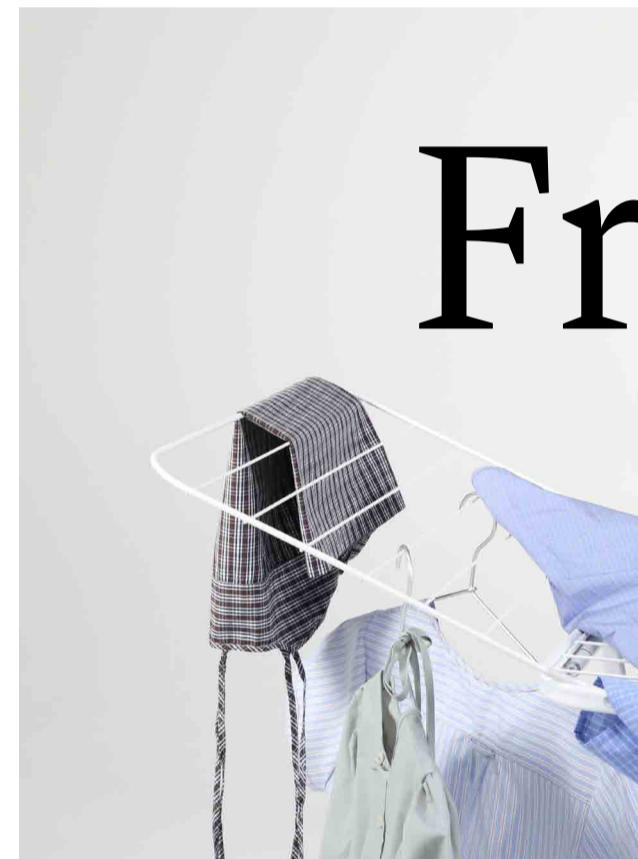
	SIZE S/M	SIZE M/L	SIZE L/XL
BUST	47,5 cm	52,0 cm	56,5 cm
HIP	48,5 cm	52,0 cm	57,0cm
ARM	21,0 cm	27,0 cm	28,5 cm
LENGTH	58,0 cm	53,0 cm	46,0 cm

About the pattern

From what is to what is yours



From having to choosing.



From owning to using.



Deconstruction



1. Choose your garment.



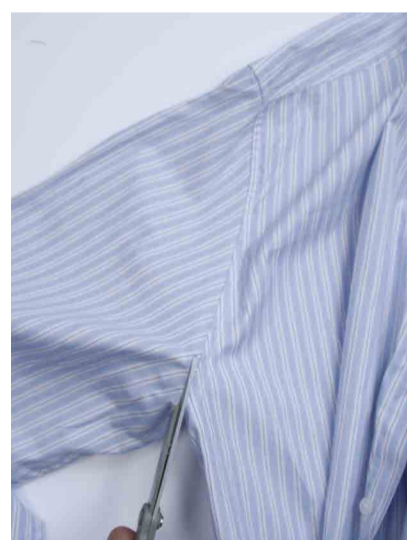
2. If your garment is wrinkled, iron it. It will make working with it a lot easier.



3. To prepare the material, cut off the collar



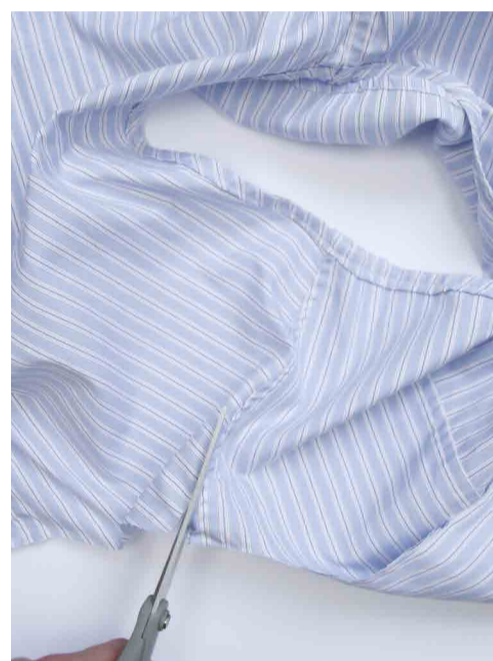
4. Cut off the cuffs on both sleeves.



5. Next, cut off the sleeves.



6. Then cut them open on the seam.



7. Separate the shoulders.

Arrangement of pattern pieces



1. To cut the back and the front, fold the shirt in half.

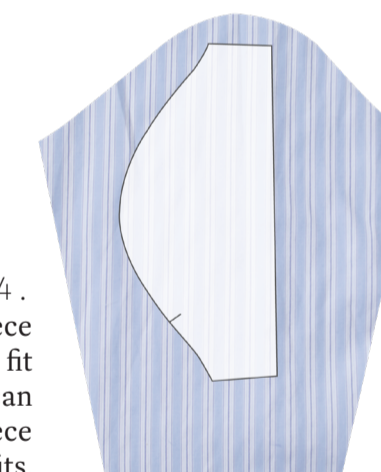


This is a suggestion of how to place the pieces on the shirt. However, you can lay them in a way that works best for you and your material. As the pattern comes in different sizes, you might have to adjust the placement of the pattern pieces so that all of them fit onto the material.

The back piece should be **cut on the fold**. This means you fold your fabric in half, then align the dotted edge of the pattern piece with the folded edge of the fabric. Do not cut along the fold. Instead, cut around the other edges of the pattern. When you unfold the fabric, you'll have a full, symmetrical back piece. When cutting the front piece, simply make sure that the buttons and the buttonholes align.



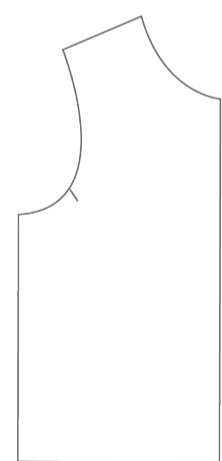
3. Pin and cut the sleeves



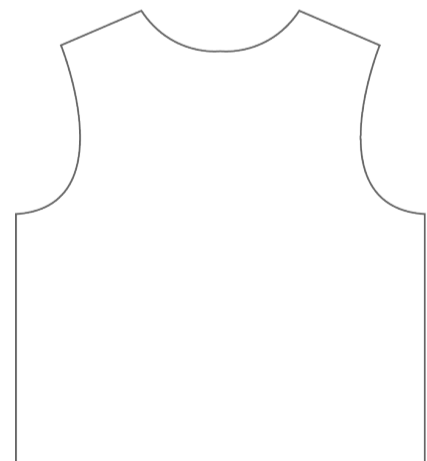
4. In case the pattern piece of the sleeve does not fit on the material, you can align the pattern piece however it fits.

Pattern pieces

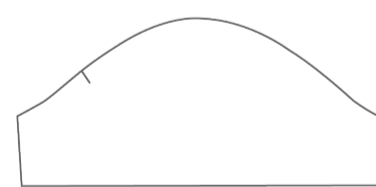
The patterns pieces for the blouse can be found on the extra sheet. All pattern pieces already include a seam allowance.



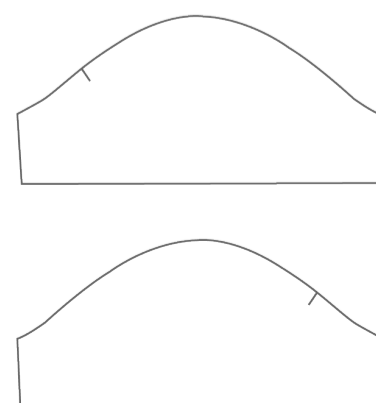
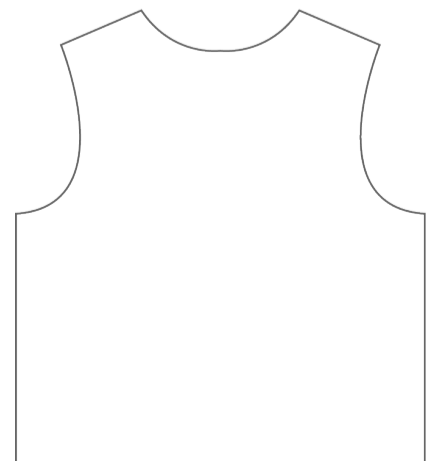
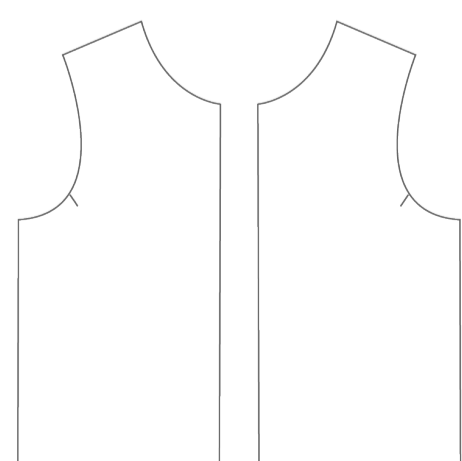
FRONT
Cut both ways



BACK



SLEEVE
Cut both ways



ATTENTION:

1. There are sleeve variations on page 23 that include a sleeve with ruffles. If you want to make one of the variations, check page X on how to cut the sleeve.

2. When cutting the pieces make sure that the buttons are on the same height, so you can properly close them at the final piece. In case you have cut them asymmetrically and the buttons and buttonholes do not fit, simply remove all the buttons and sew them back on in a way they fit.

Full collection of pieces

This is an overview of all the pieces you need to create the crossbody bag. For the lining, you can take whatever material you have available. This can be an old garment or some left over fabrics.

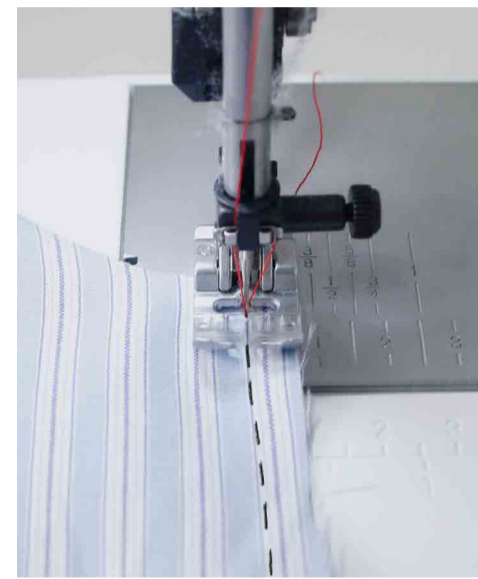


Sewing instructions// the body



1. First, close the side seam using a **french seam**.

For the **french seam**, lay the front and back with the left side of the fabric facing each other.



2. Sew with a seamallowance of 0,5 cm.

SEAM ALLOWANCE :

To sew two pieces together, you always need some space between the edge of the fabric and the seam.
The seamallowance is usually 1 cm
(For this pattern all seam allowances are already included in the pattern)

RIGHT SIDE :

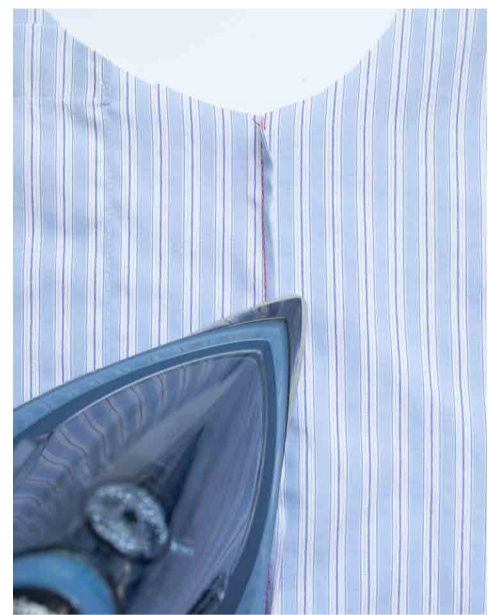
Is the „nicer“ side of the fabric, the one that is normally worn on the outside.

WRONG SIDE :

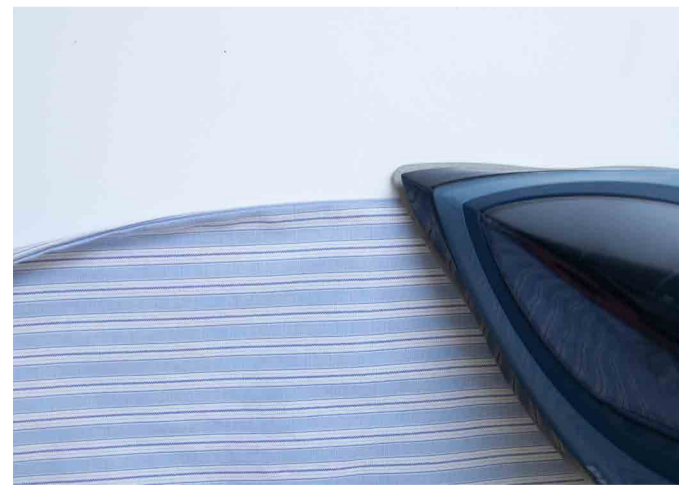
Is the „not-so-nice“ side of the fabric, the one that is normally worn on the inside.



3. Cut back any seamallowance that might be bigger than 0,5 cm, it does not have to be very exact.



4. Iron the seamallowance to one side.



5. Turn your piece around so that the right sides are now facing each other and iron.

Sewing instructions// the body



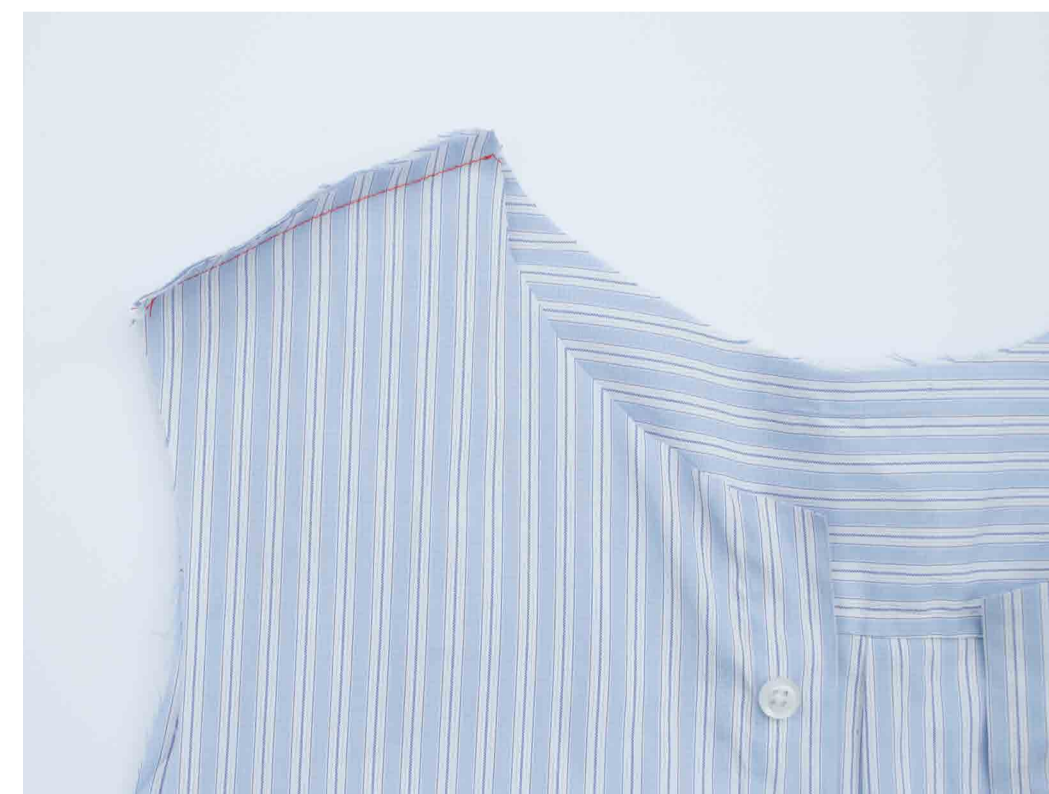
6.



7. Sew with a seamallowance of 1cm



8. Iron the seam to one side. You have now created a french seam.



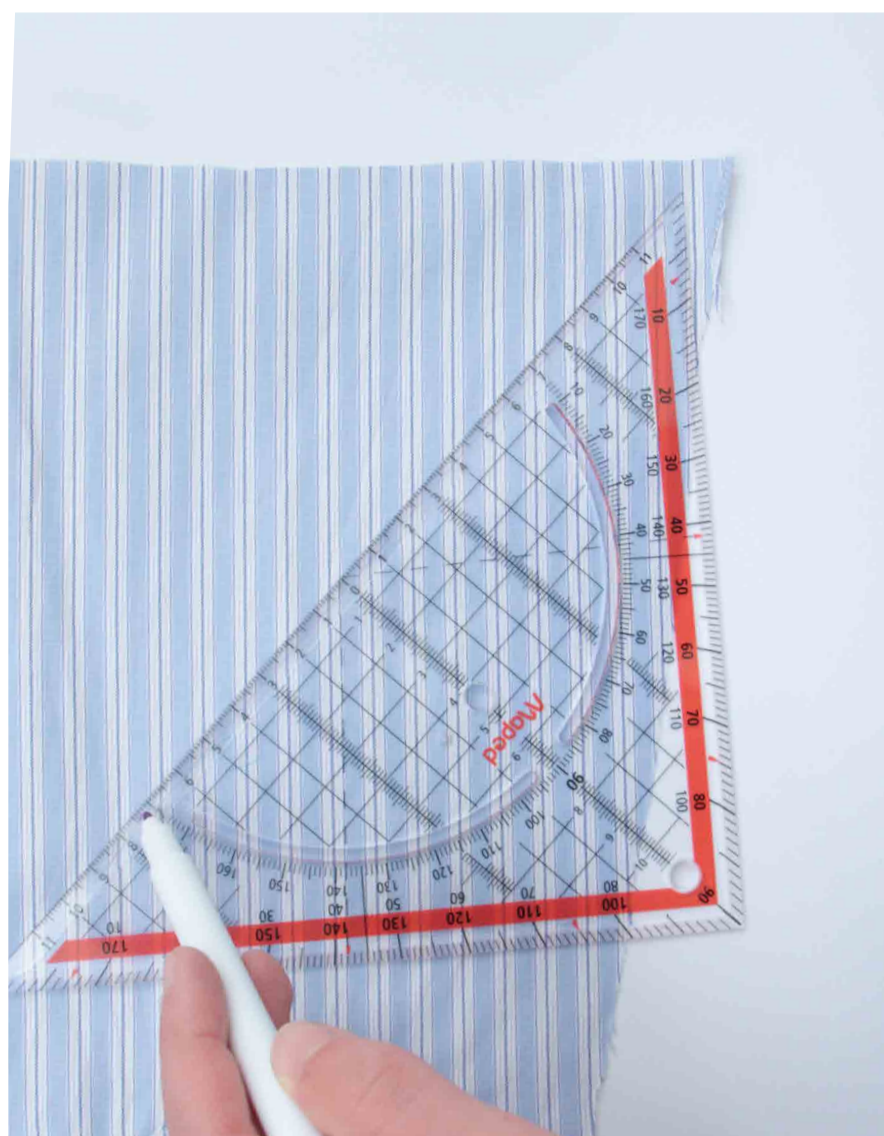
10.



9. Now, close the shoulders with a french seam as well.

Sewing instructions//bias tape

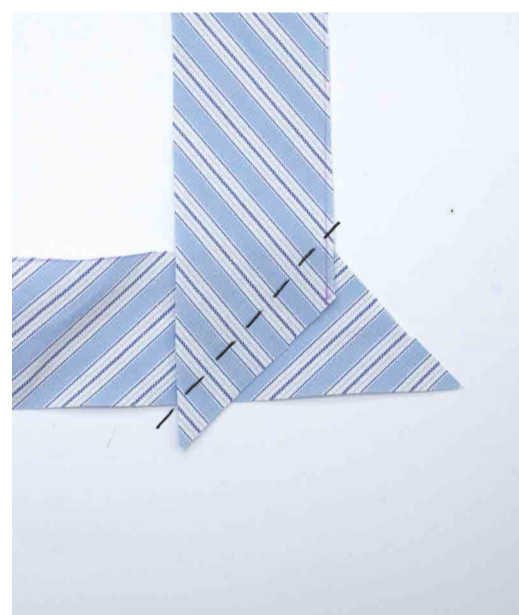
Bias Tape is used to finish raw edges. Here it is used to finish the collar and provide a button hole for the top button.



1. On your fabric, draw stripes of 3,5 cm diagonally.



2. Cut out the stripes.



3. Lie the stripes on top of each other as in the picture with the right side of the fabrics facing each other (RST).



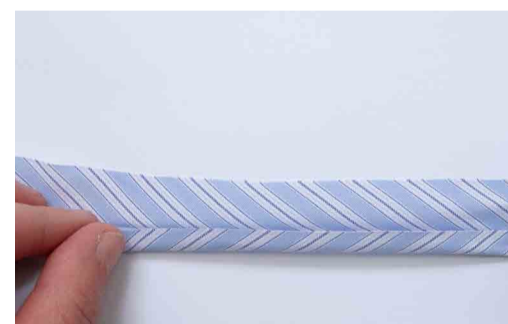
4. Sew the pieces together. Sew together about 3 - 4 stripes to have enough material for the collar.



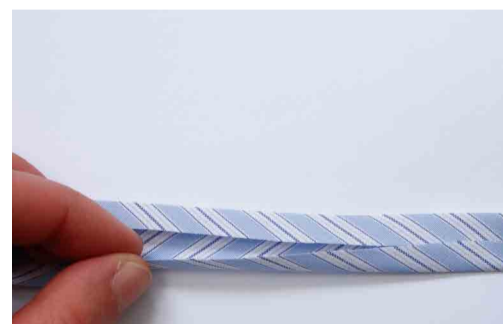
5. Open the straps back up and cut off the seamallowance to about 1 cm.



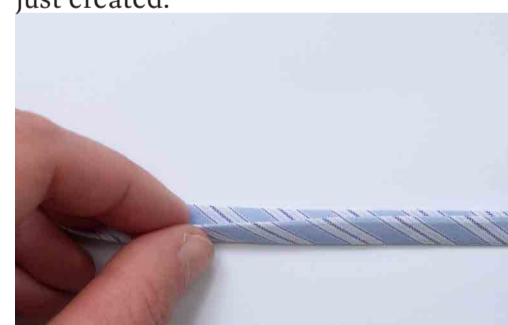
6. Iron the tape in half so that the right side of the fabric is facing inside.



7. Open the ironed tape back up and iron the edges to the half mark you have just created.



8. Repeat the same on the other side so that the tapes looks like this.

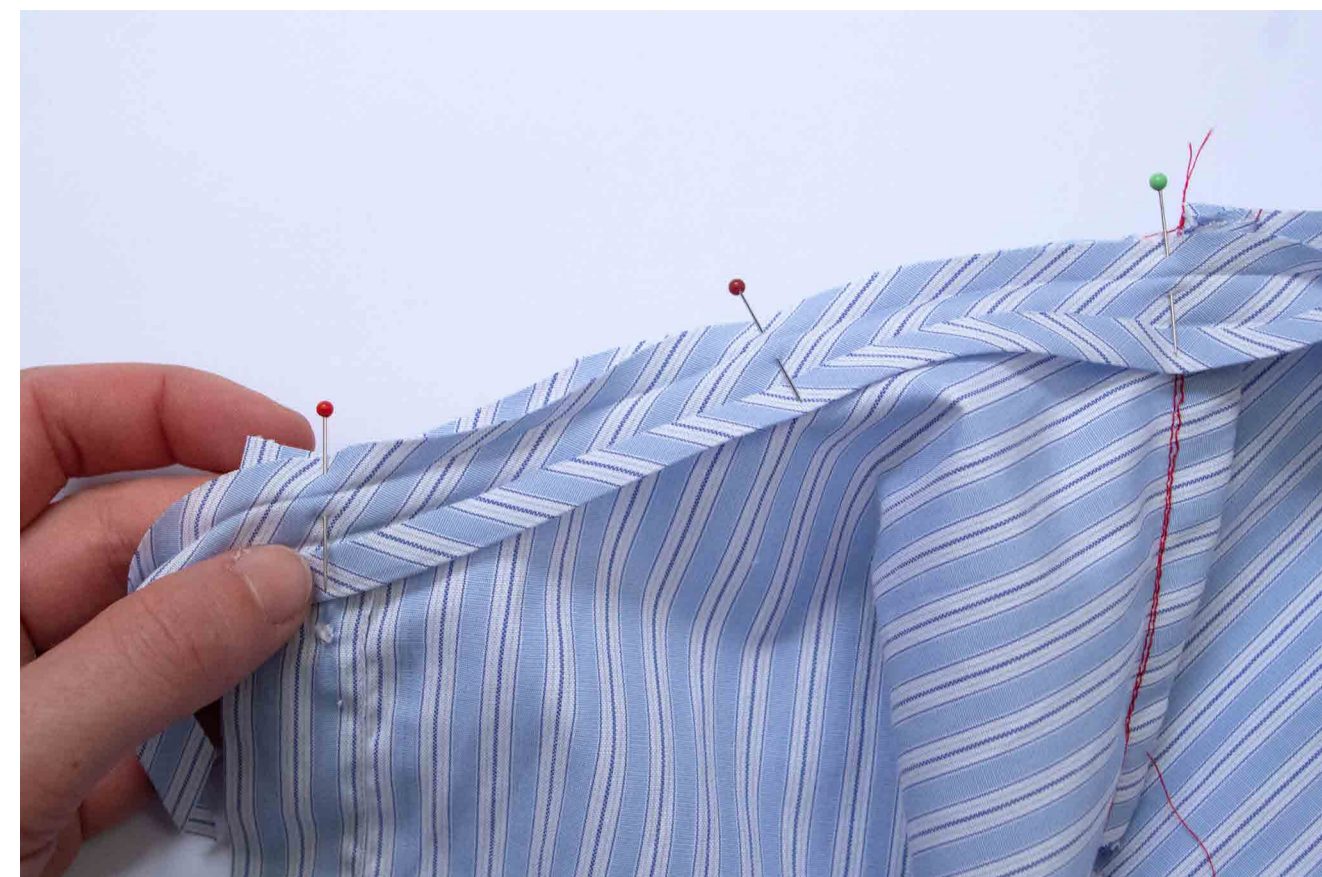


9. Now, again iron the tape in half.



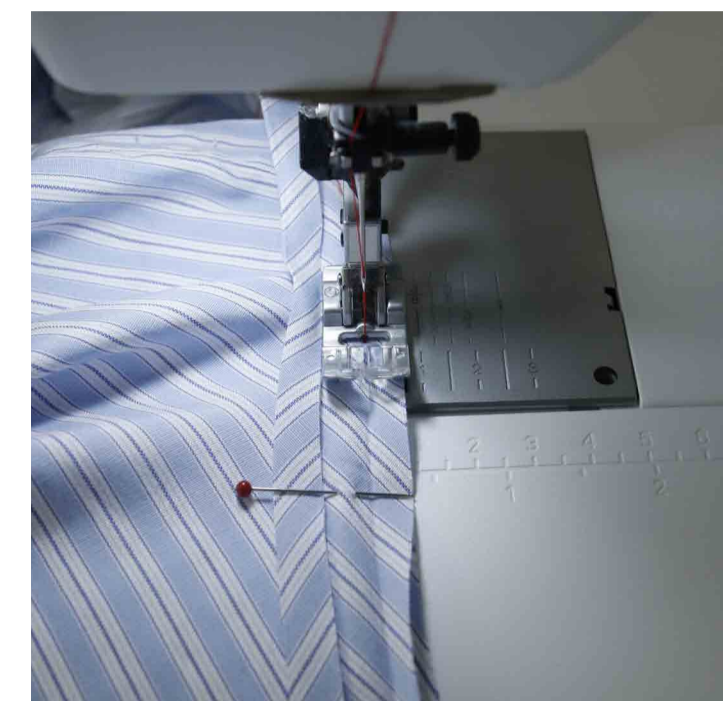
10. The tape is now ready to be sewn onto the garment.

Sewing instructions// bias tape



11. Pin the tape to the edge of the collar along the left side/inside of the garment.

Leave a little extra tape in the beginning.



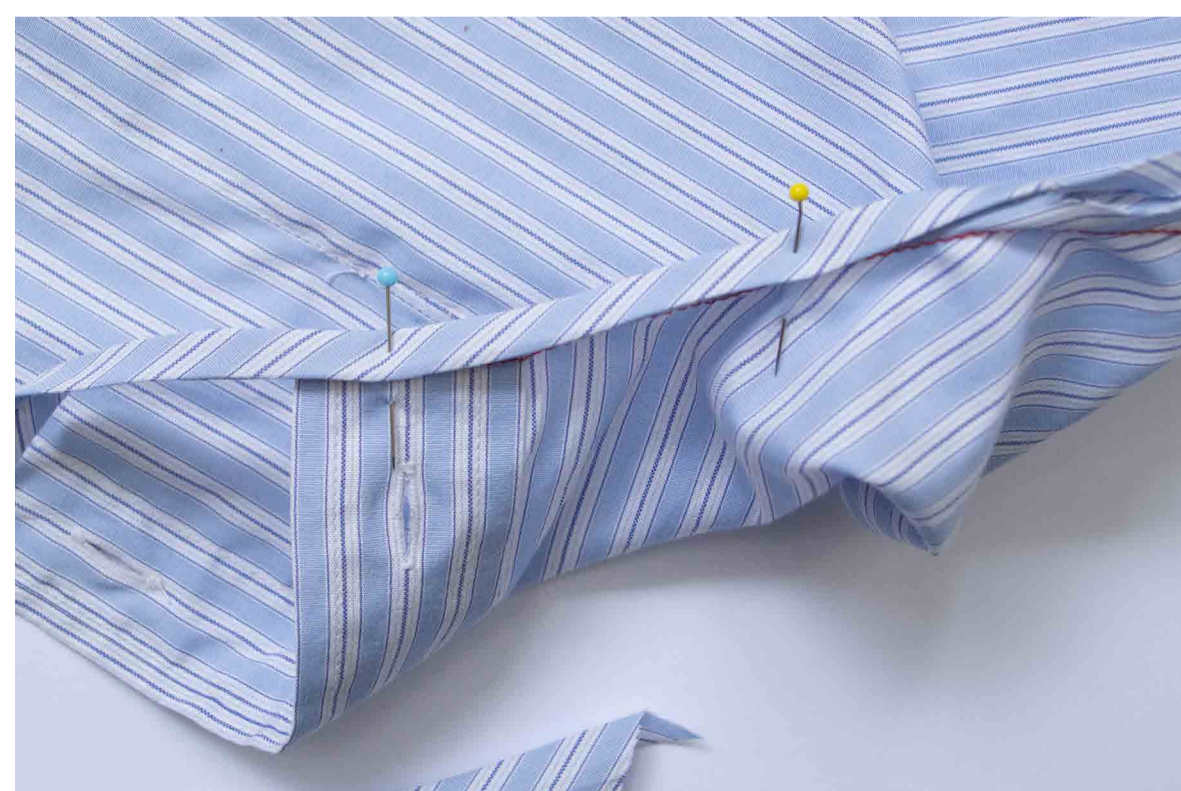
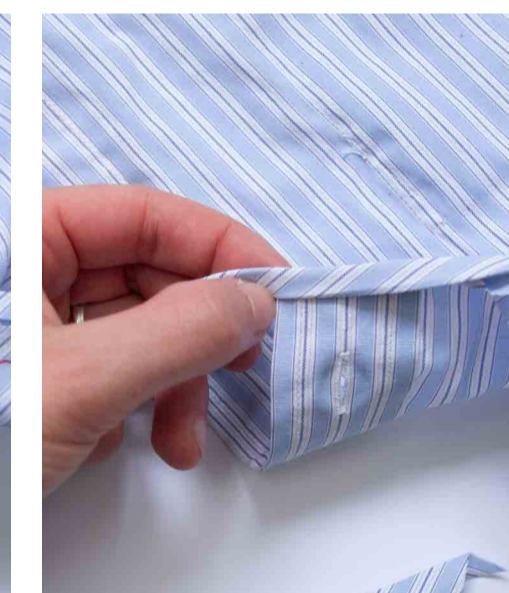
12. Sew the tape to the garment. Use the crease you created with the ironing as orientation for the seamallowance.



13.

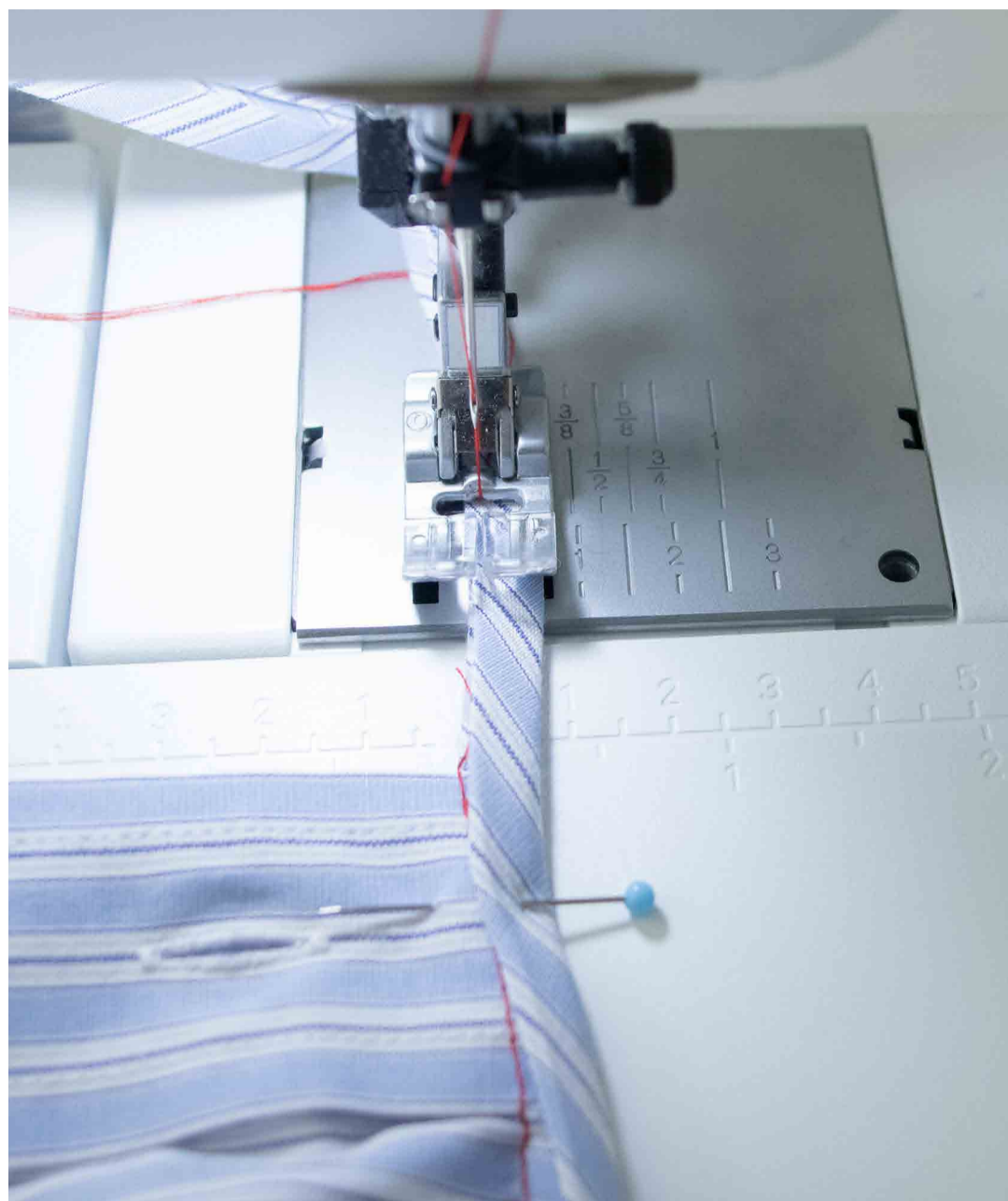


14. Fold the tape over to the other side (right side/outside of the garment).

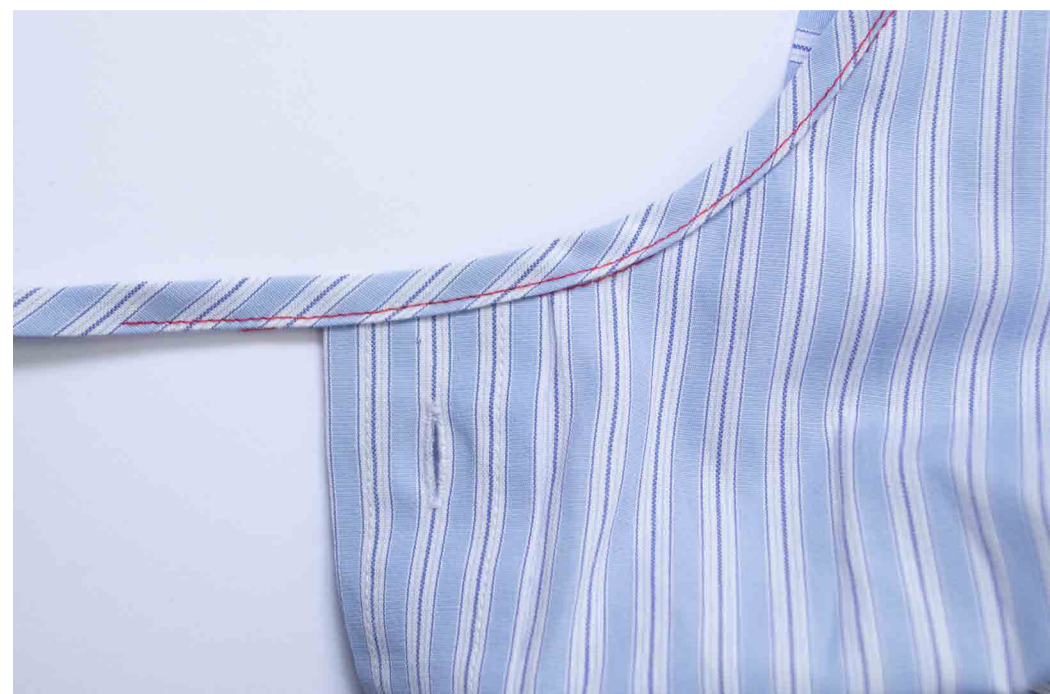


15. Pin the tape.

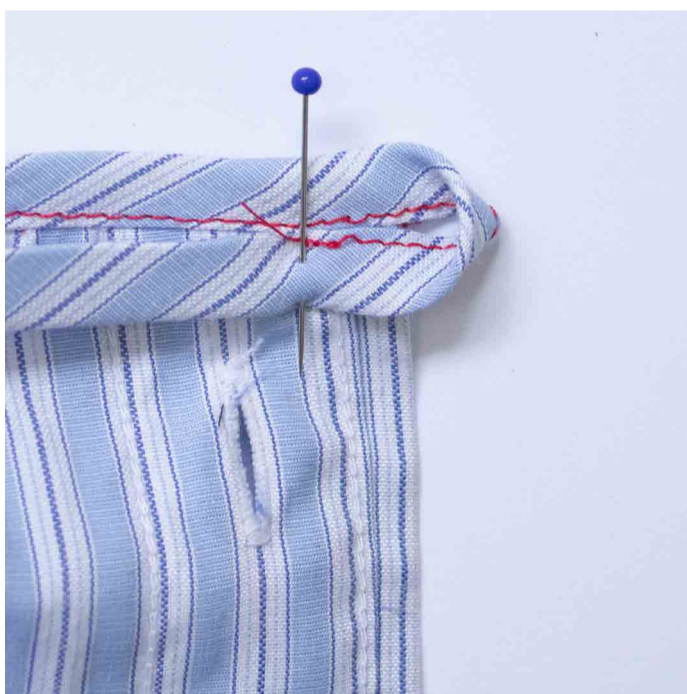
Sewing instructions//bias tape



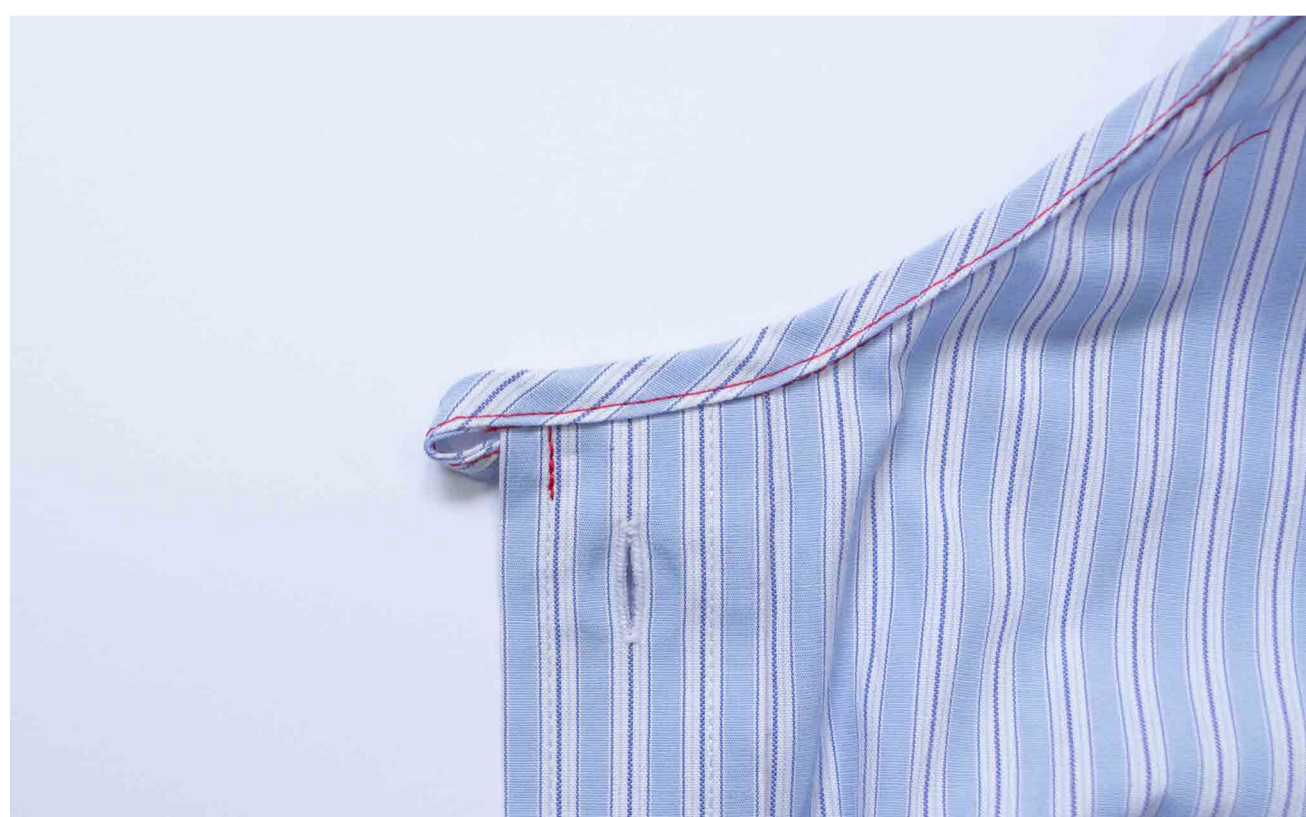
16. Sew along the edge of the tape. Start sewing the tape already before the beginning of the garment.



17.



18. Take the extra tape on the side of the buttonholes, tuck it to the inside of the garment and pin like in the picture and sew it on.



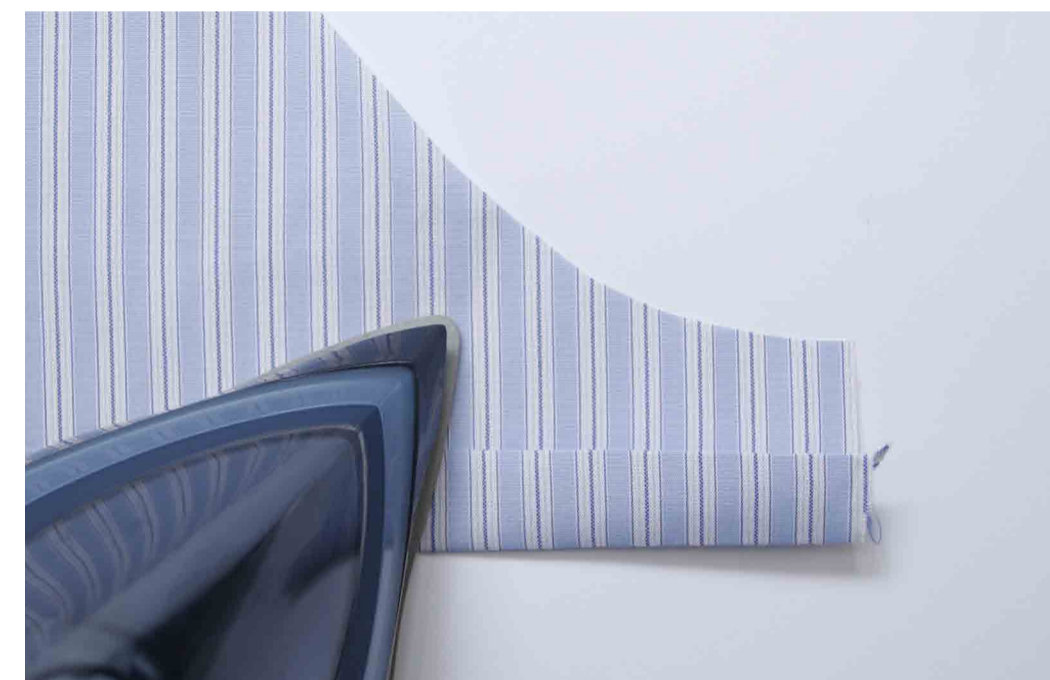
19.

Sewing instructions// sleeve

There are sleeve variations on page 23 that include a sleeve with ruffles. If you want to use these two sew your blouse, continue the instructions from there.



1. At the edge of the sleeve, first fold in and iron 1cm.



2. Then fold again and iron 2cm



3. Sew together the sleeves with the french seam method.

FRENCH SEAM:

For the french seam, first sew your pieces together with the **left** sides facing each other and then again with the **right** side facing each other.

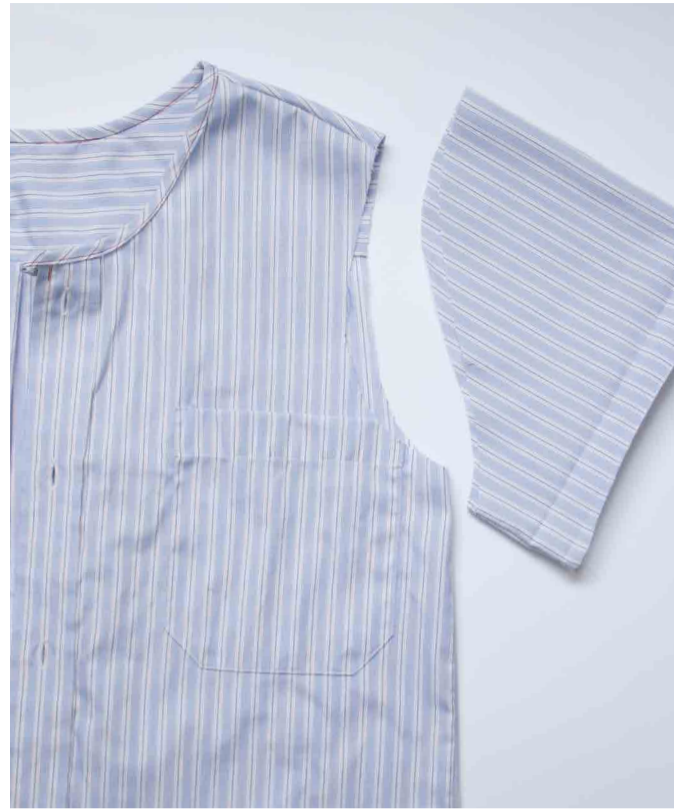
RIGHT SIDE:

Is the „nicer“ side of the fabric, the one that is normally worn on the outside.

WRONG SIDE:

Is the „not-so-nice“ side of the fabric, the one that is normally worn on the inside.

Sewing instructions//sleeve



4. Lay the sleeve and the body so that the notch at the armhole and the notch on the sleeve align.



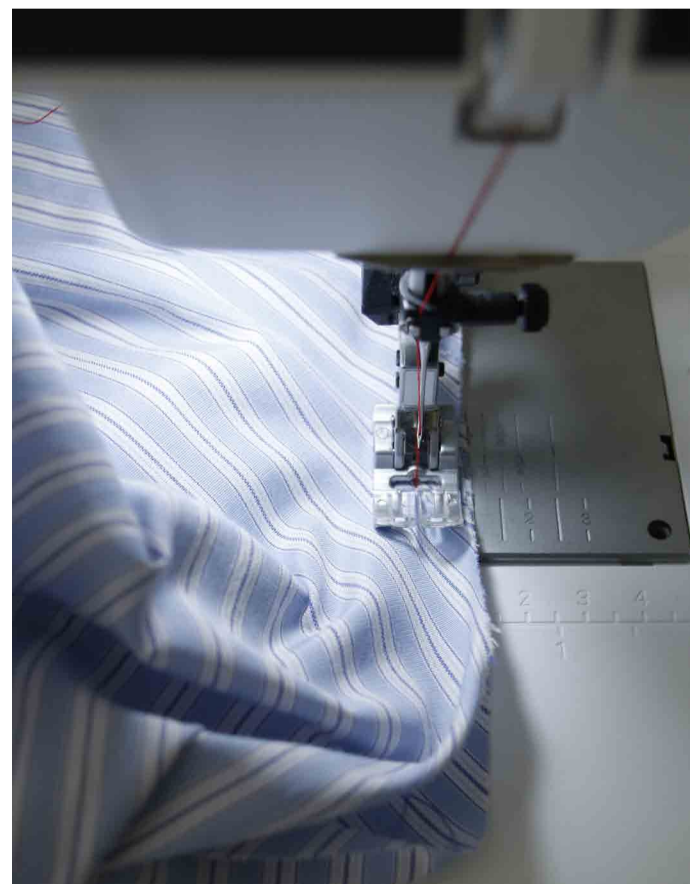
5. Now, with the right sides together, pin the notch of the sleeve to the notch of the garment.



6. Open the garment so you can see the armhole from the inside



7. Pin the sleeve to the armhole.

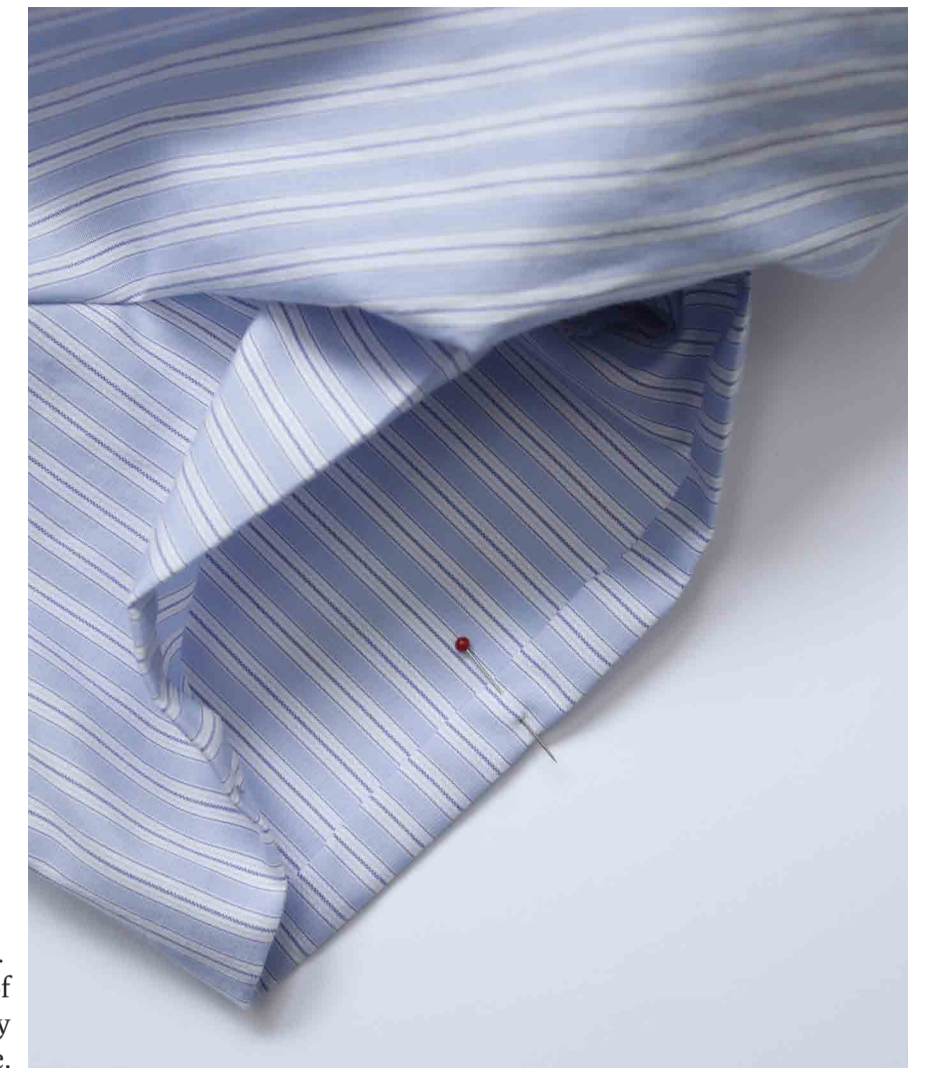


8. Sew the sleeve to the armhole with a 1cm seamallowance.



9. Cut away any seamallowance that might be more than 1cm. Then, with the zig zag stitch of you sewing machine finish the edge of the seamallowance.

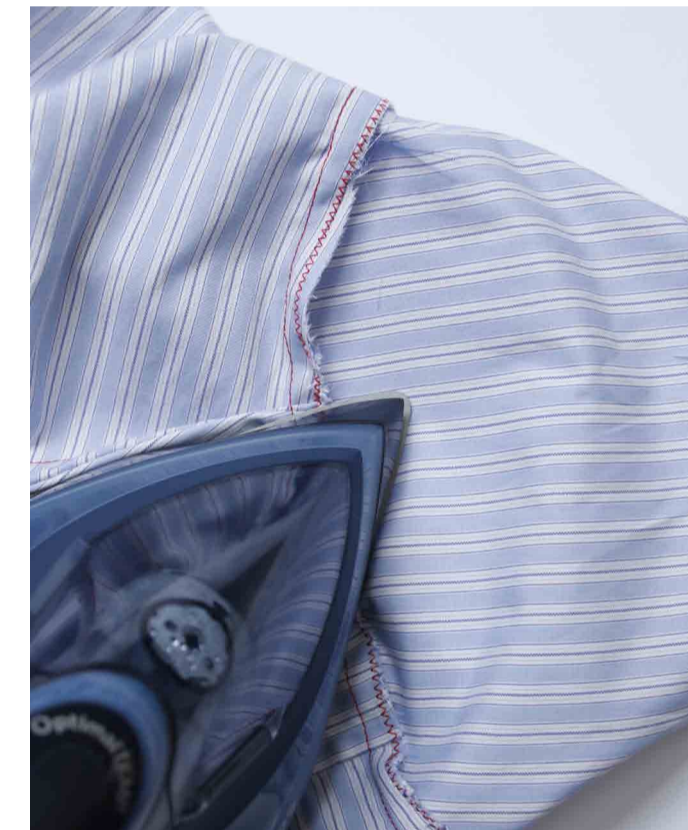
Sewing instructions// sleeve



10. Fold and pin the hem of the sleeve based on the way you ironed it before.



11. Sew around the hem of the sleeve close to the edge you ironed.



12. Iron the seamallowance on the side of the sleeve.



13. Repeat the same with the other sleeve.

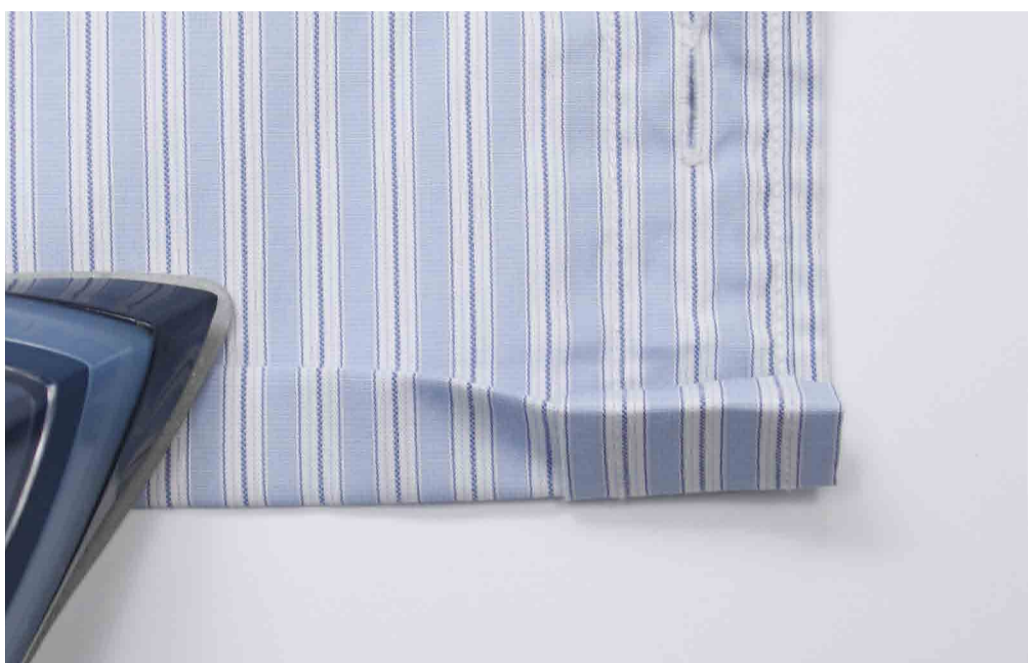
Sewing instructions//hem



1. Similar to the sleeve, first fold in the hem and iron 1cm.



3. Pin the hem before sewing



2. Then fold again and iron 2cm.



4. Sew along the entire hem along the edge of the fold.



5. Cut the bias tape to about 3cm.



6. Similar to the bias tape on the other side of the collar, pin the tape to the inside of the garment.



7. Sew the tape over the seam of the bias tape, this way its almost invisible.



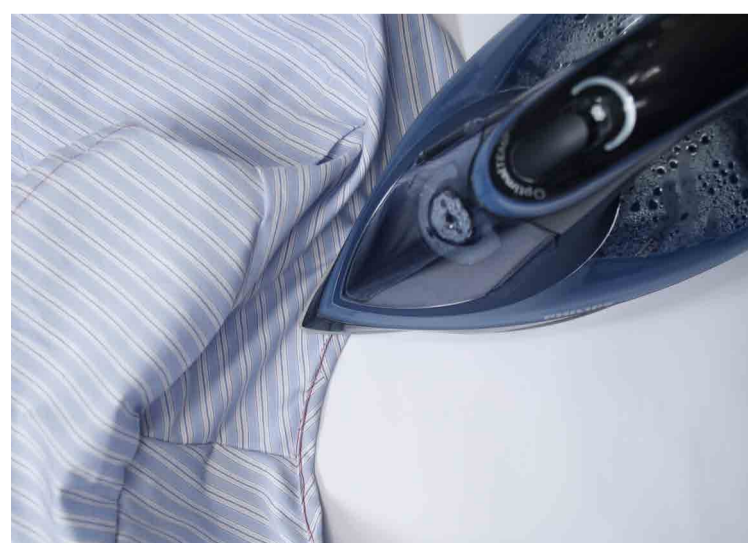
8. For the button, cut off one of the buttons of the remaining fabric.



9. Close the garment to see where the button needs to be located, then sew it on by hand.



10. Iron the entire garment, especially the seams.



11.

Sewing instructions// sleeve variations



1. For a ruffled sleeve at the shoulder, cut the pattern of the sleeve open at the marked spot. Attach the pattern to the sleeve and leave as much space between the pieces as possible.



2. Cut out the sleeves.



3. At the edge of the sleeve, first fold in and iron 1cm.



4. Then fold again and iron 2cm.



5. Sew together the sleeves with the french seam method.

FRENCH SEAM:

For the french seam, first sew your pieces together with the **left** sides facing each other and then again with the **right** side facing each other.

BACKSTITCH:

Topstitching is a stitch that is seen on the outside either for decorative reasons or for enforced endurance.



6. Then, with a wide stitch, sew along the top of the sleeve for about 10 cm. When sewing **only do a backstitch when you start sewing but not at the end.**



7. You can now pull the thread where you did not backstitch. This way you are creating a ruffle.

Sewing instructions// sleeve variations



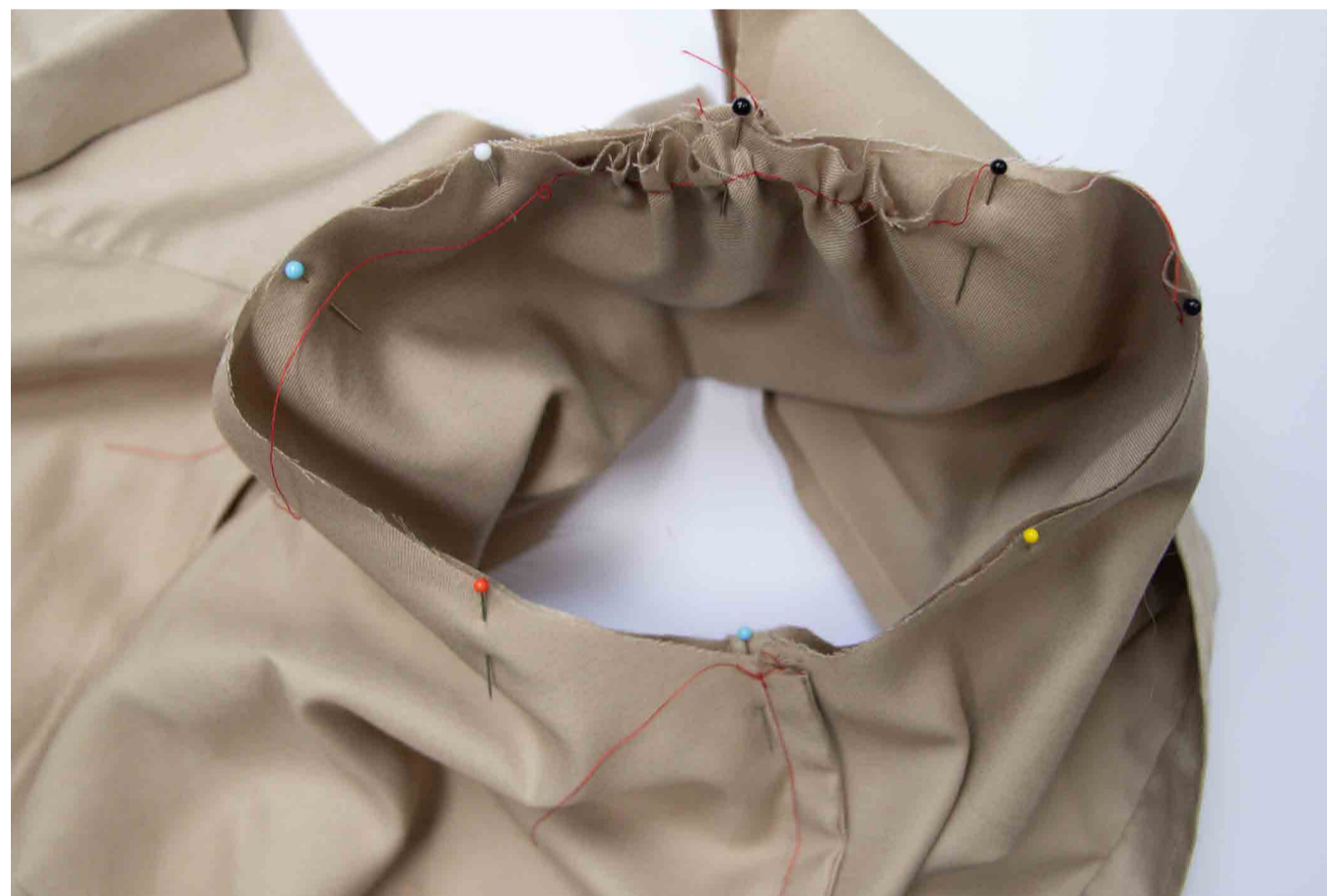
8. Lay the sleeve and the body so that the notch at the armhole and the sleeve align.



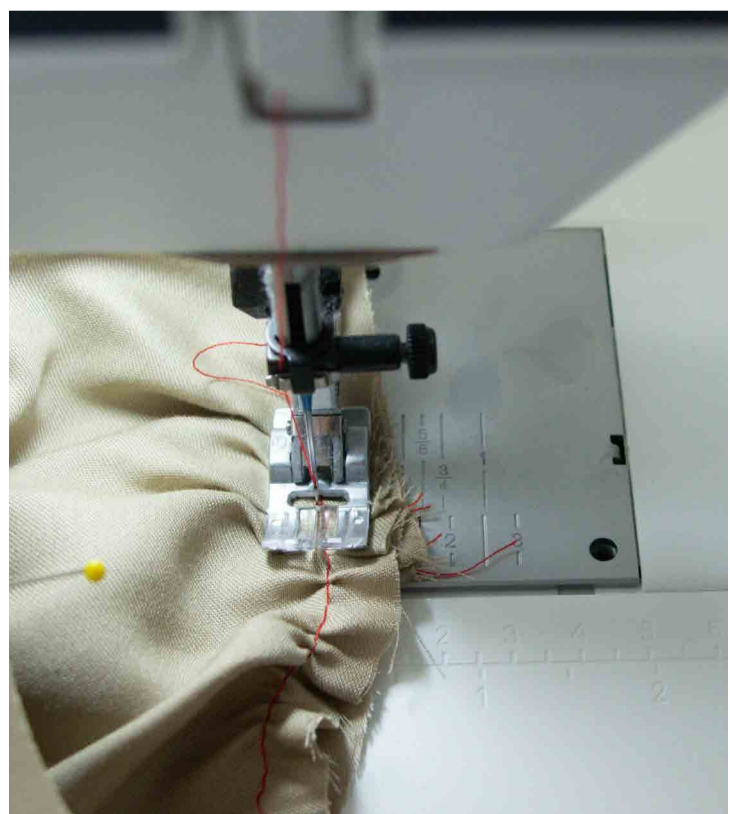
9. Now, with the right sides together, pin the notch of the sleeve to the notch of the garment.



10. Open the garment so you can see the armhole from the inside



11. Pin the sleeve to the armhole. You might have to move the ruffles around a little until they fit the size of the armhole.



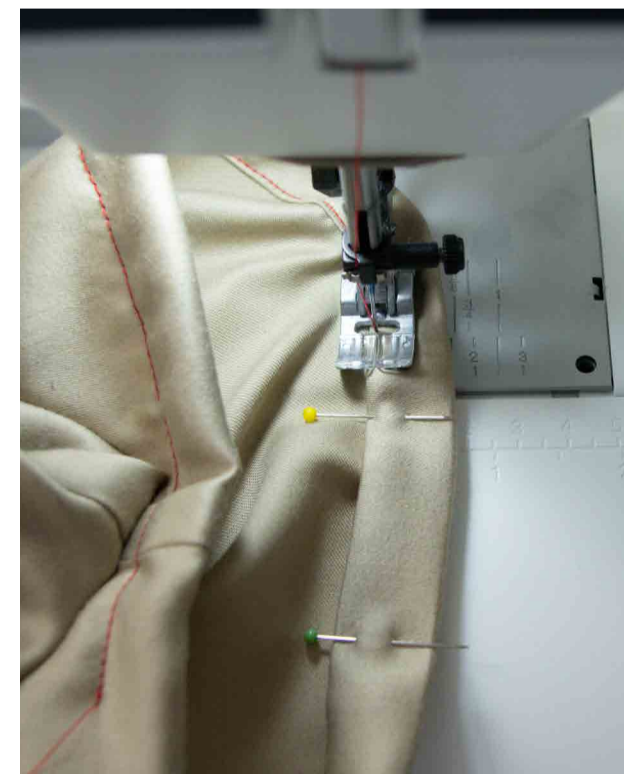
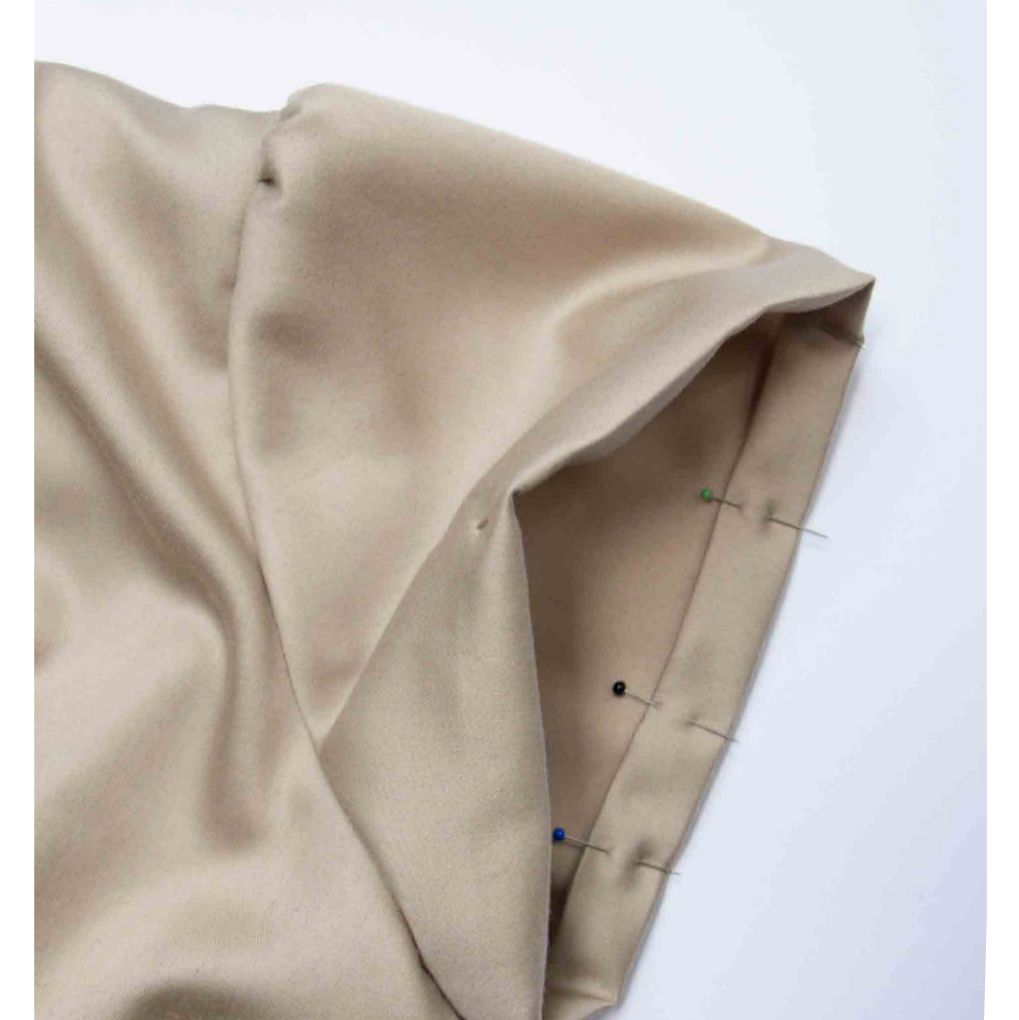
12. Sew the sleeve to the armhole with a 1cm seam allowance. Cut away any seam allowance that might be more than 1cm. Then, with the zig zag stitch of your sewing machine, finish the edge of the seam allowance.

Sewing instructions// sleeve variations

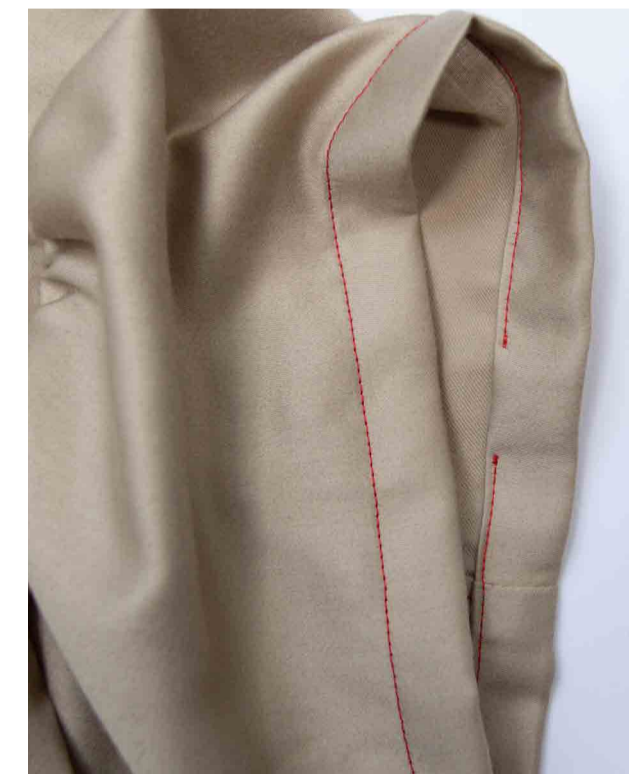


13.

14. Fold and pin the hem of the sleeve based on the way you ironed it before.



15. Sew around the hem of the sleeve close to the edge you ironed.



16. If you want to add an elastic to the hem of the sleeve leave about 3 cm open when sewing the hem.

Sewing instructions// sleeve variations



16. Measure the elastic so it feels comfortable around your arm, then leave about 2 cm extra as a seamallowance. Attach the elastic to a safety pin.



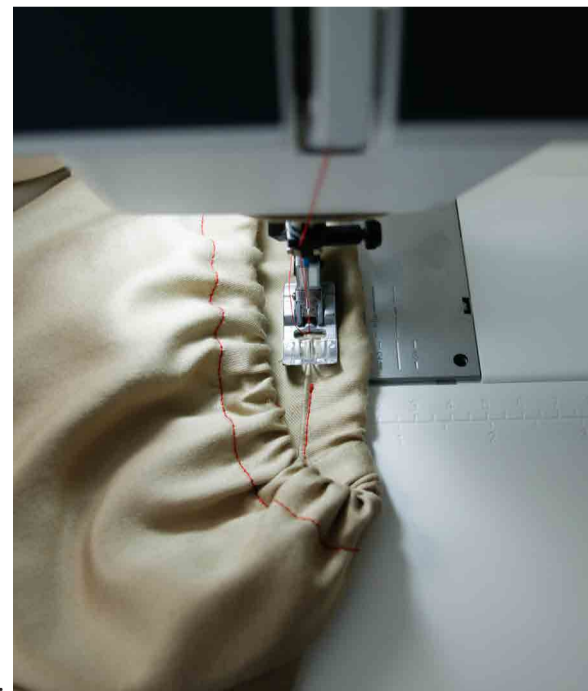
17. Pull the safety pin through the hem of the sleeve with the safety pin.



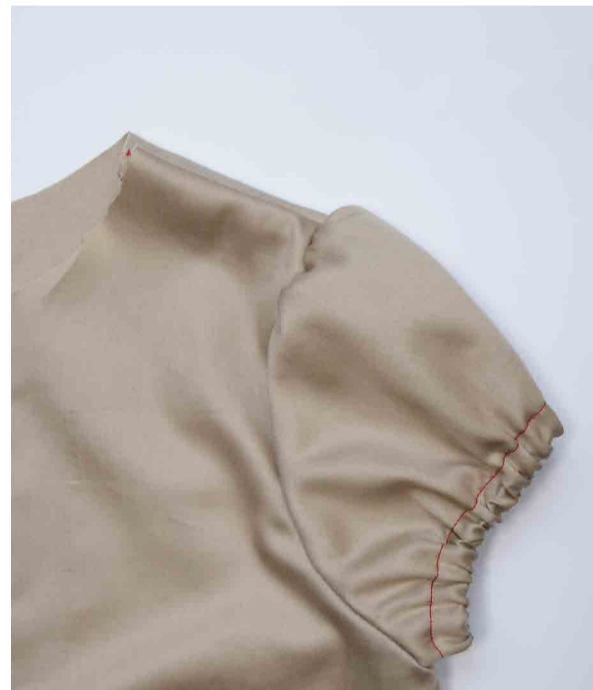
18.



19. Secure the elastic by stitching back and forth a couple of times.



20. Close the rest of the hem.



21.



remake

crossbodybag



crossbodybag

About the pattern

The pattern explains how to make a denim jeans into a crossbodybag.
The crossbodybag can be made in two different sizes, depending on the material you have available.

The pattern is not a zero- waste pattern, so it will not be using up all the material and there will be some left overs. Of course you are free to further decorate your bag or keep the left overs for patchworking projects. If not, please make sure you dispose them properly.

CONTENT :

Deconstruction	p. 32
Overview of pattern pieces	p. 32
Cutting out the pieces	p. 33
Sewing instructions	p. 34
pattern pieces to cut out	extra sheet

MATERIAL :

To make sure, the bag fits on different types of pants, the pattern is adaptable for two different sizes. When cutting out the pieces, simply check which of the sizes work best for your particular pair of jeans.

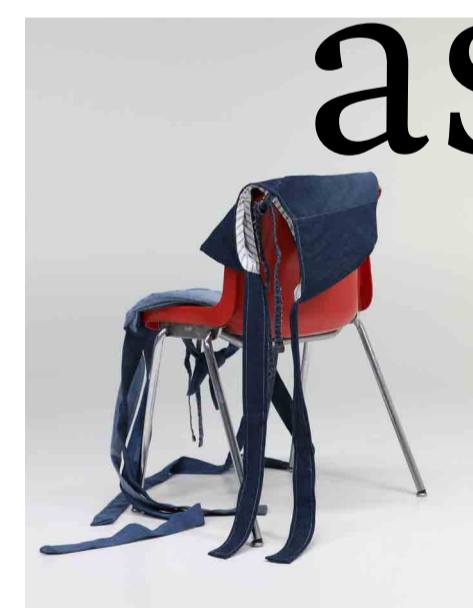
PATTERN PIECES :

This pattern is available in two different sizes - small and big- depending on the amount of material you have available. You can find the pattern pieces on the extra sheet

Cross the line



from old to new,
from garment to
object,



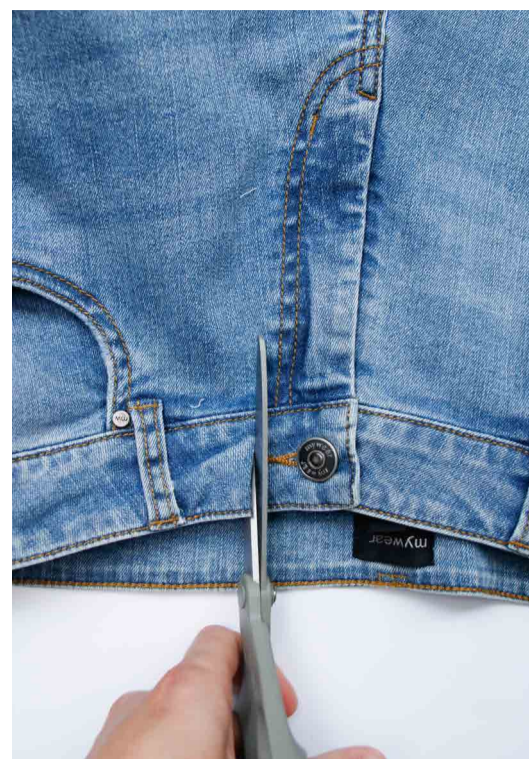
as activity arises
from intention
and use replaces
stillness.

About the pattern

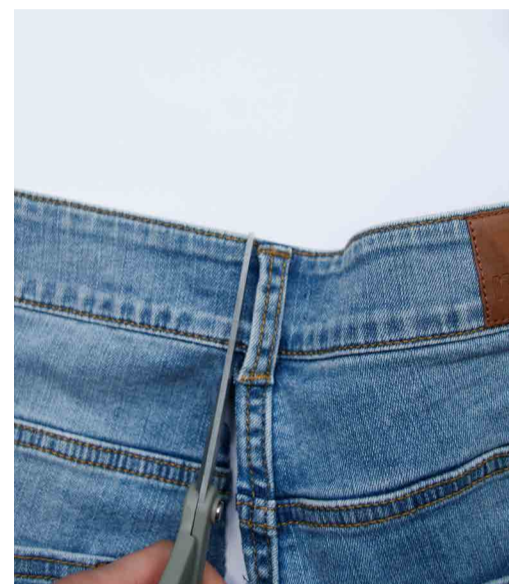
Deconstruction



1. Choose your garment



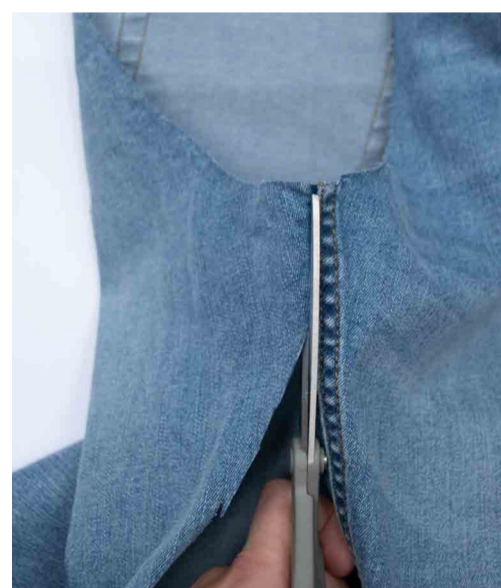
2. To prepare the jeans for cutting out the pattern pieces, we will first cut the two legs apart. therefore we gently cut around the zipper all the way from the front to the back



3.



4. Next, cut open the legs on the inner seam



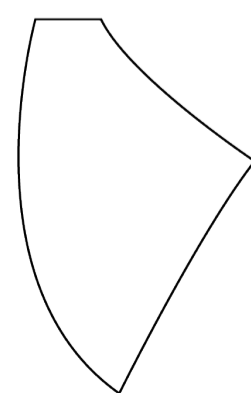
5.



6. For the closing of the bag, cut of the hem of the pants to use as ribbons. You can also use different ribbons.

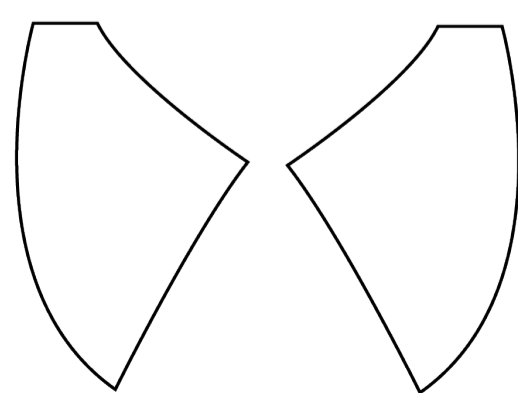
Overview of pattern pieces

This pattern is available in two different sizes - small and big- depending on the amount of material you have available. You can find the pattern pieces on the extra sheet. All pattern pieces already include a seamallowance.

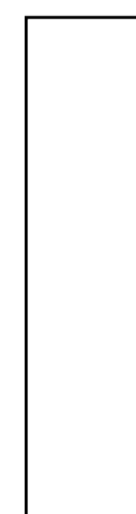
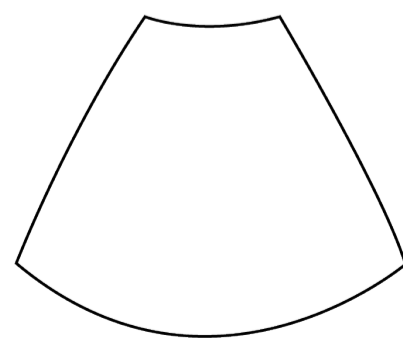


SIDE

Cut both ways



MIDDLE



STRAPS

Arrangement of pattern pieces

This is a suggestion of how to lay the pattern of the bag onto the denim material. However, you can lay them the way that works best for your specific material. The pattern comes in three different sizes, so if you have a pair of jeans that offers less material, you can go down in size. Just make sure that all pattern pieces are cut out in the same size.

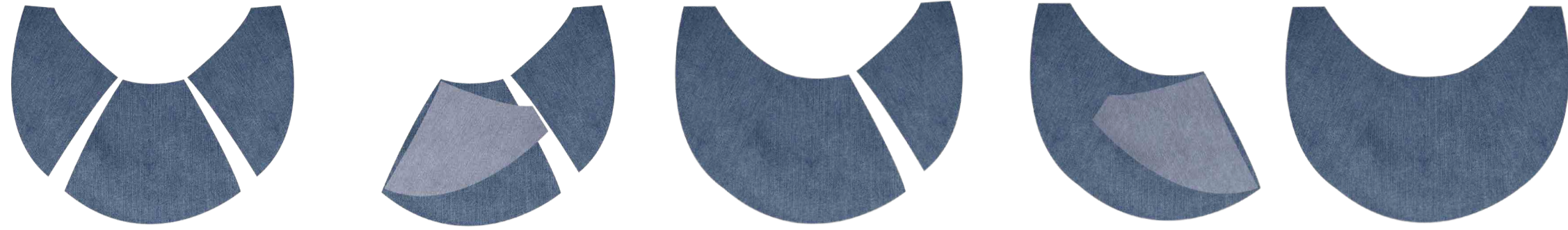


Full collection of pieces

This is an overview of all the pieces you need to create the crossbodybag. For the lining, you can take whatever material you have available. This can be an old garment or some left over fabrics.



Sewing instructions//the body



1. First, **RST (right sides together)** sew together the Middle with the Side pieces.

2.

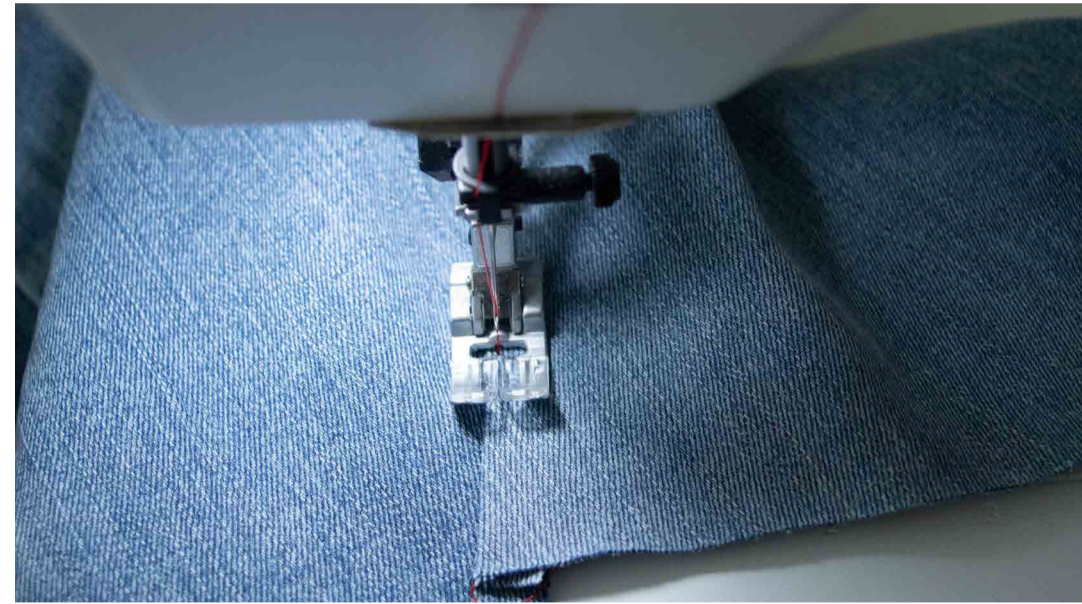
3.

4.

5.



6. Iron the seam allowance to one side.



7. To topstitch, sew along the edge of the seam on the right side of the fabric as in the picture.



8. Sew the two pieces together along the bottom edge (Seamallowance 1 cm).



9. Lay the two sides of the body on top each other so that the right sides are facing each other, sew the two pieces together along the bottom edge (Seamallowance 1cm).



10. Cut into the seamallowance, this will make the bag lay nicer



11. Turn the bag inside out.

Sewing instructions//the straps



1. There will be two straps for the bag. First sew two individual strap-pieces together on the short side (**RST**) (Seamallowance 1cm).



2. Iron apart the seamallowance.



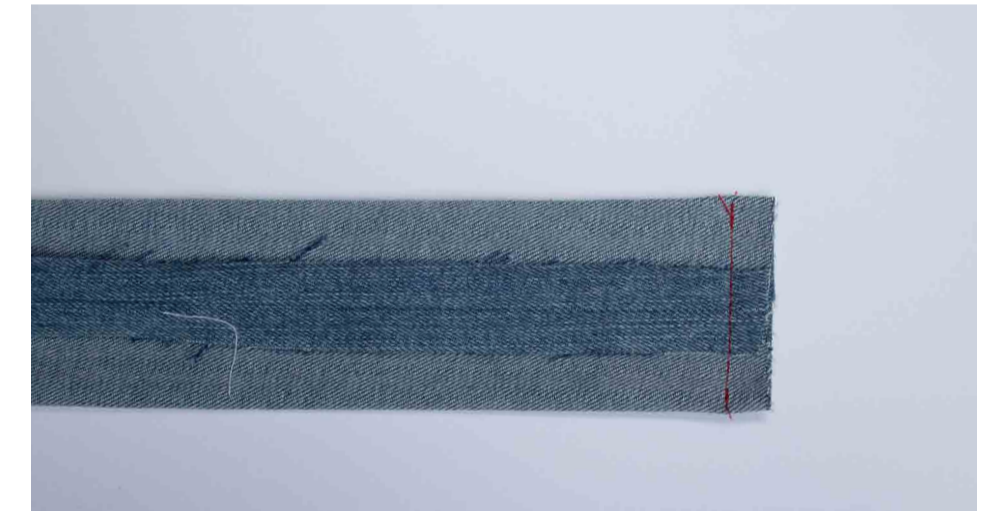
3. Now, with the **right side of the fabric facing inside**, fold the straps in half on the long side.



4. Sew together on the long side (Seamallowance 1cm).



5. Iron apart the seamallowance. Lay the straps so that the seamallowance is in the middle of the strap.



6. Close one side of the straps (Seamallowance 1cm). Repeat the same for the other strap.

RST (RIGHT SIDES TOGETHER) :

On every fabric there is a „right“ side (facing outwards, nicer looking side) and a „left“ side (inwards facing side, not-so-nice side). When sewing two pieces together always make sure that the right sides of the fabrics are facing each other.

SEAMALLOWANCE :

To sew two pieces together, you always need some space between the edge of the fabric and the seam. The seamallowance here is 1cm, meaning there is 1cm between the needle of the sewing machine and the edge of the fabric.

TOPSTITCH :

Everytime you make a seam on the sewing machine, it's important to step a couple of stitches back and forth the secure the thread.

Sewing instructions//the straps



7. Now, turn the tunnel you have just created inside out, so that the right side of the fabric is facing outwards.



8. It's helpful to get a ruler or some type of stick to make the turning inside out easier.



9.



10.



11.

Sewing instructions//the straps



12. The edges of the closed end might look a bit off after turning them inside out.



13. To help make them look nicer, you can try to carefully pull out the corners with a pin needle.



14.



15. Iron the straps.

Sewing instructions//the straps



16. To make the straps stay in shape, you can topstitch the straps by sewing around the edge.



17.



18. The straps are attached to the sides of the bag.



19. Place the strap in the center of the side

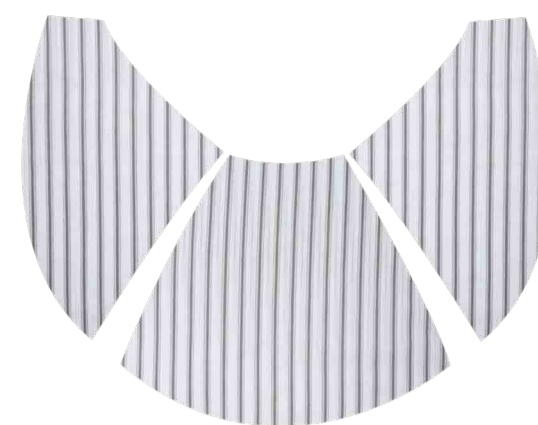


20. You can attach it with a pin before sewing.

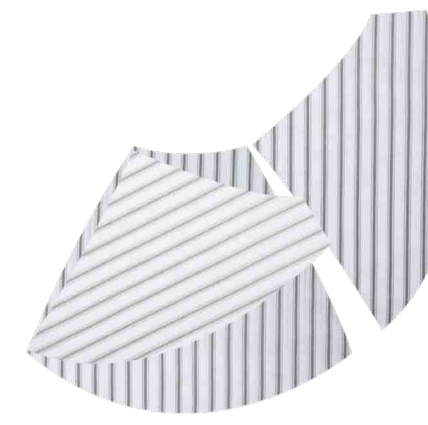


21. Sew the strap to the bag (Seamallowance 1) and repeat the same on the other side.

Sewing instructions//the lining



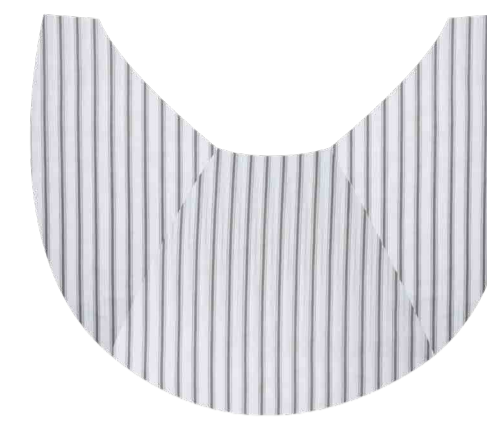
1. The lining of the bag is worked almost exactly as the outside of the bag.



2. Sew together Middle with the Sides **RST** (Seamallowance 1cm).



3.



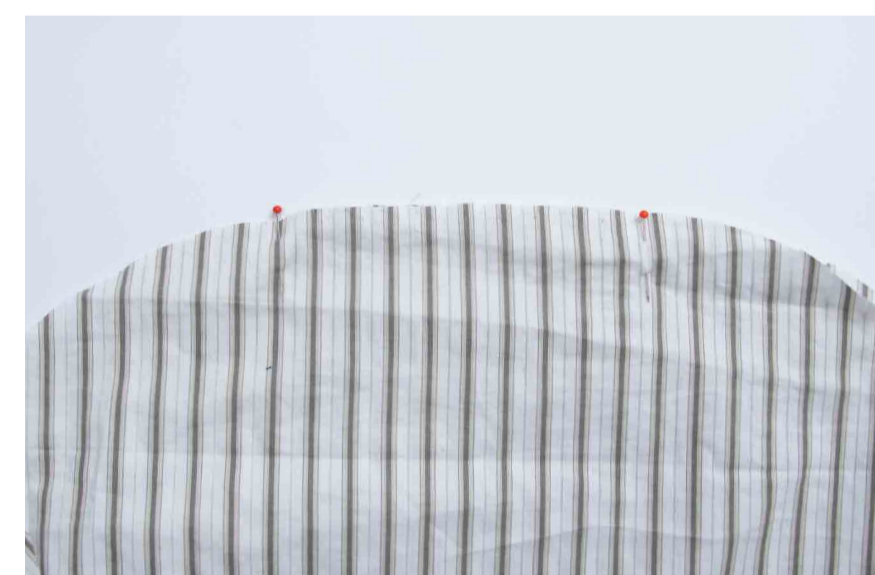
4.



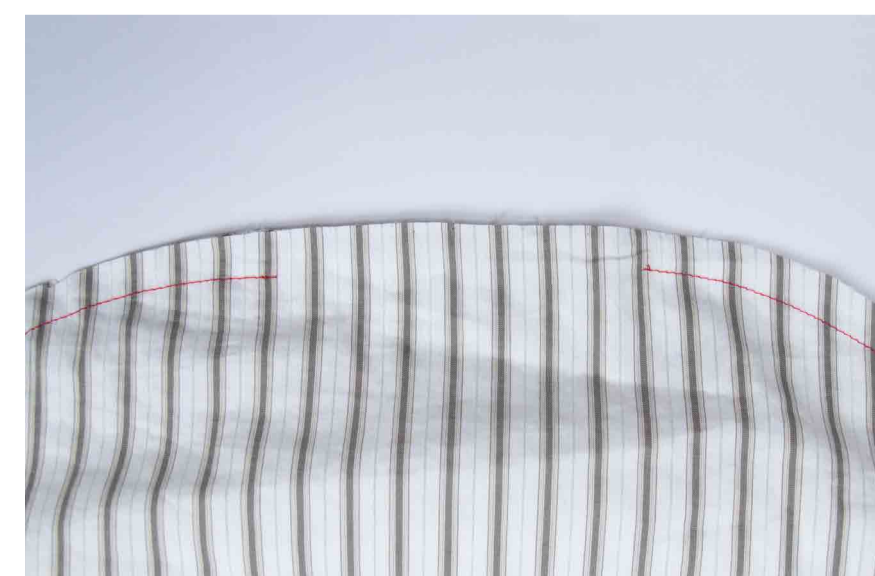
5. Iron the seamallowance apart.



6. When sewing together the two pieces of the bag along the bottom, **leave a approximately 10cm wide hole**. You will need it to turn the bag inside out later.



7.



8.

RST (RIGHT SIDES TOGETHER) :

On every fabric there is a „right“ side (facing outwards, nicer looking side) and a „left“ side (inwards facing side, not-so-nice side). When sewing two pieces together always make sure that the right sides of the fabrics are facing each other.

SEAMALLOWANCE :

To sew two pieces together, you always need some space between the edge of the fabric and the seam. The seamallowance here is 1cm, meaning there is 1cm between the needle of the sewing machine and the edge of the fabric.

TOPSTITCH :

Everytime you make a seam on the sewing machine, it's important to step a couple of stitches back and forth the secure the thread.

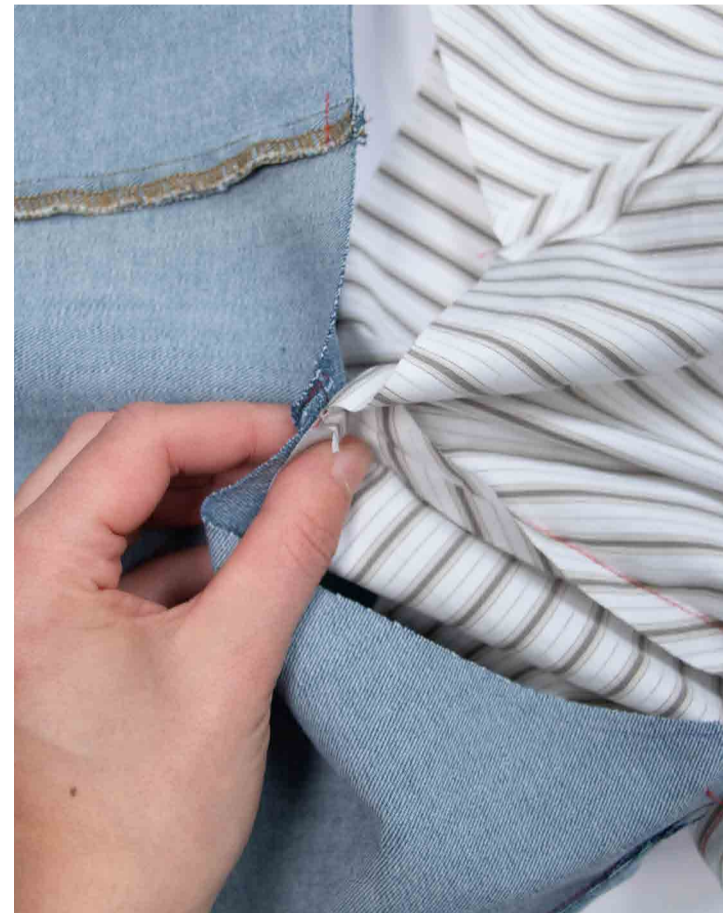
Sewing instructions//the straps



1. To connect the lining and the body of the bag, turn the lining and the bag inside out so that **the wrong side of the fabric** is on the outside. **Make sure the straps and ribbons are inside the bag!**



2. Next, attach the lining to the bag using pins. It's easiest to start **attaching the seams of the lining to the matching seams of the body of the bag**. When attaching make sure that the **right** sides of the fabric are facing each other.



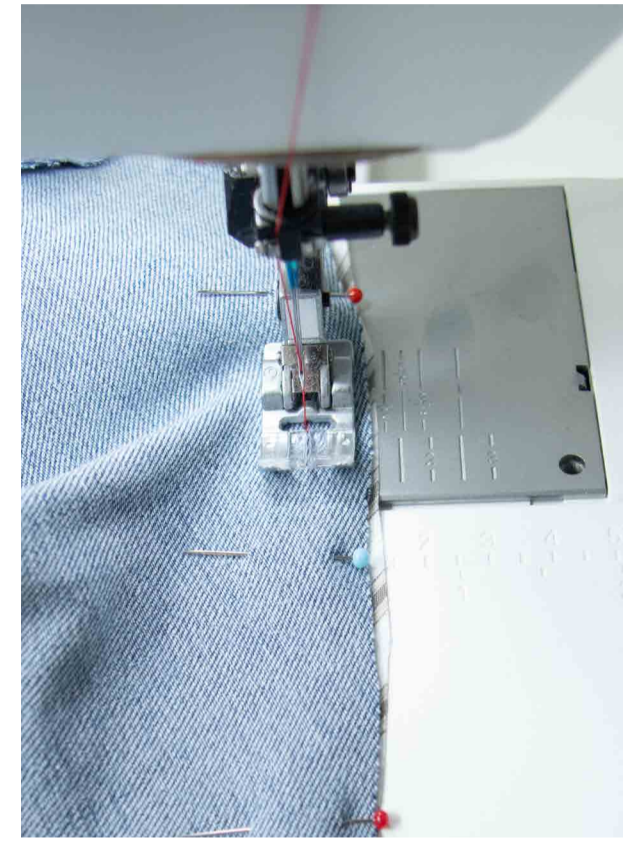
3.

Sewing instructions//the straps

Sewing instructions//the lining



4.



5. Now sew around the entire edge of the bag (Seamallowance 1cm).



6.



7. Through the remaining hole in the lining, turn the bag inside out.



8.



9.



10.



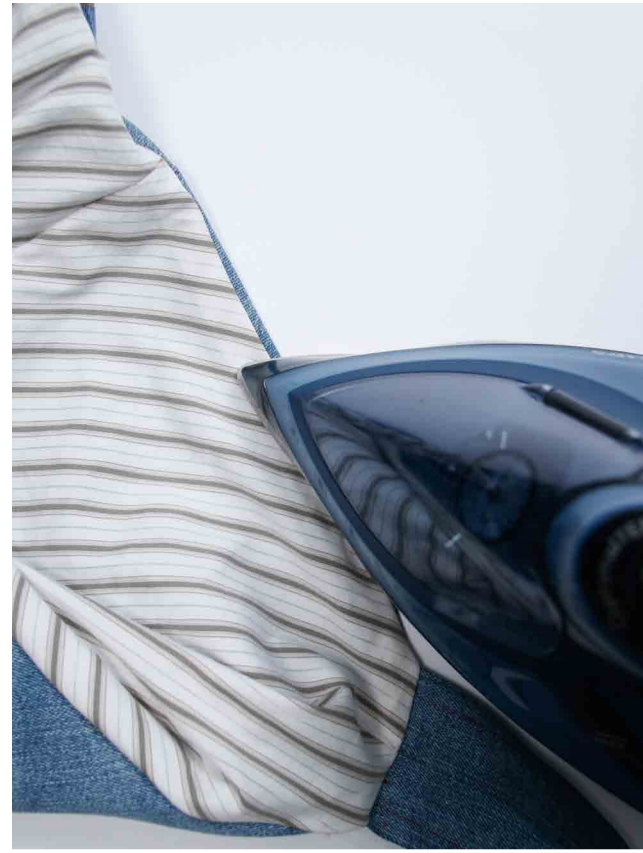
11.



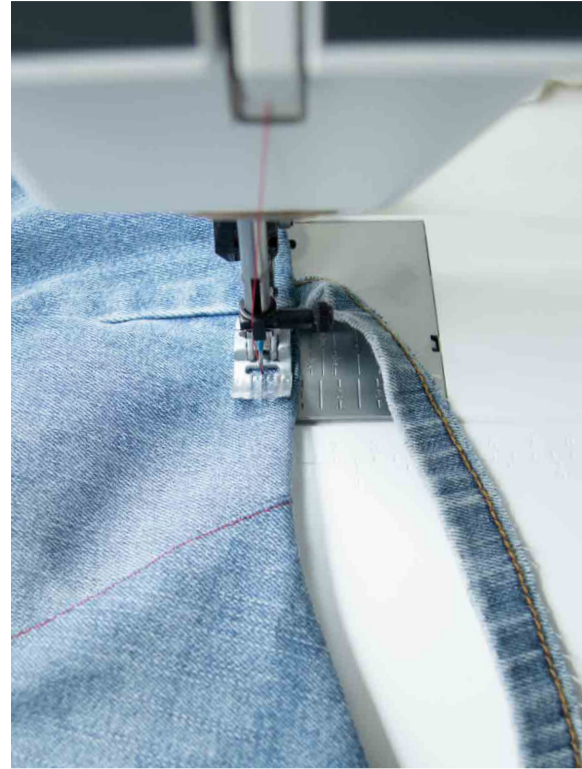
12.

Sewing instructions//the straps

Sewing instructions//final steps



1. Iron the seam so the lining turns to the inside of the bag.



2. To secure the lining, you can topstitch the opening of the bag.



3.



4. Lastly, close the remaining hole in the lining



6. Secure with pins



5. Fold the seam allowance inside



7. Then sew along the edge.



8.

Sewing instructions//final steps



Patternsheet blouse